



VXCB-01  
Commercial  
Advance  
Backpack

User Guide



3 YEAR WARRANTY

# GENERAL SAFETY INFORMATION

## PLEASE KEEP THESE ORIGINAL INSTRUCTIONS FOR FUTURE REFERENCE.

This Manual shall be considered an integral part of the machine and should be carefully looked after for subsequent reference.



**WARNING:** ALWAYS READ THE USER GUIDE THOROUGHLY BEFORE USE.

**WARNING:** READ THIS INSTRUCTION MANUAL BEFORE USING THIS MACHINE AND ALWAYS FOLLOW THE SAFETY AND MAINTENANCE INSTRUCTIONS.

**WARNING:** OPERATORS SHALL BE ADEQUATELY INSTRUCTED ON THE USE OF THIS MACHINE.

**WARNING:** THIS MACHINE IS NOT SUITABLE FOR PICKING UP HAZARDOUS DUST (CONTACT VAX FOR SPECIFIC EQUIPMENT FOR THIS USE).

**WARNING:** DO NOT USE THIS MACHINE IN WET CONDITIONS.

**WARNING:** THIS MACHINE IS INTENDED FOR THE VACUUMING OF DRY DUST AND/OR SMALL DEBRIS OFF DRY CARPETED OR HARDFLOOR SURFACES IN INDOOR AREAS ONLY.

**WARNING:** DO NOT USE THE MACHINE WITHOUT THE DUST BAG AND FILTERS IN PLACE.

**CAUTION:** THIS MACHINE IS FOR INDOOR USE ONLY.

**CAUTION:** THIS MACHINE SHALL BE STORED INDOORS ONLY.

1. Remove the machine from packaging and ensure it and all its accessories and attachments are present and in perfect condition. Contact the place of purchase immediately in the event of any discrepancies.
2. The electrical specifications of this machine are noted on the data plate which is located near the power switch. Ensure the specifications correspond to those of the mains power supply in your area.
3. If the machine is without a rating plate, contact the place of purchase immediately.
4. This machine is intended for domestic use.
5. Do not restrict the vacuum cleaner's airflow. Maintain the vacuum cleaner regularly so that all filters and openings are free of dust, lint, hair build-up or anything else which may affect airflow.
6. If the machine has been dropped, damaged, left outdoors or has been exposed to liquids, return it to your local authorised Vax Service and Warranty Agent for a safety check.

# GENERAL SAFETY INFORMATION

7. Do not use the machine to pick up flammable or combustible liquids or materials, such as petrol etc. and do not use in areas where they may be present.
8. Do not vacuum anything that is burning or smoking such as cigarettes, hot coal or hot ashes.
9. Do not vacuum up hard or sharp objects such as glass, nails, screws etc.
10. Keep hair, loose clothing, fingers and all parts of the body away from moving parts and openings.
11. Keep the machine and power cord away from heated surfaces.
12. Do not unplug the machine while it is turned on. Turn the machine off, turn the power off at the power outlet then unplug by grasping the plug and pulling gently to unplug.
13. Do not handle the machine, power cord or plug with wet hands.
14. Unplug from power point when not in use, before servicing or before changing filters and attachments.
15. Do not pull or carry the machine by the power cord.
16. Do not close doors on the power cord and do not pull the cord around sharp edges or corners.
17. Regularly check the power cord for damage, such as cuts, abrasions, exposed wiring or aging. If the power cord or plug is damaged, the complete power cord must be replaced by your local authorised Vax Service and Warranty Agent in order to avoid an electric shock. The power cord should only be replaced with a Vax Genuine Spare Part with the same specifications.
18. Store in an appropriate place after use to prevent tripping accidents.
19. This appliance is not intended for use by persons (including children) with reduced physical, sensory or mental capabilities, or lack of experience and knowledge, unless they have been given supervision or instruction concerning use of the machine by a person responsible for their safety. Children should be supervised to ensure that they do not play with this machine.
20. Use only the manufacturer's recommended attachments and/or replacement parts.
21. The Vax Commercial Advance Backpack has an "A"-weighted emission sound \ pressure level of  $66 \pm 3\text{dB(A)}$  (measured at 1.5 meters).
22. Floor Tool and Attachment Use Part No. VXFLT002 - Floor Tool is intended for vacuuming of dry dust and debris off floor surfaces.
23. Part No. VXACC002 - Crevice Tool is intended for vacuuming of dry dust and debris from crevices.
24. Only Vax recommend tools and accessories should be used with this vacuum cleaner.

# GENERAL SAFETY INFORMATION

25. Vax recommends the use of a Residual Current Device rating of 30 mA or less.
26. Don't use the vacuum cleaner with incorrect voltage as this may result in damage or injury to the user. The correct voltage is listed on the rating label.
27. Don't not vacuum plaster dust, concrete dust or any other building or vitreous material.
28. Always make sure the filter and dirt container are fitted correctly before using your vacuum cleaner.
29. Use only Australian certified 10amp water proof extension cords. Care should be taken to arrange the extension cord as it can be a trip hazard.

## MOTOR THERMOSTAT

**IMPORTANT:** The motor is equipped with a thermostat. If for any reason, the vacuum cleaner should over-heat, the thermostat will automatically turn the unit off. Should this occur, turn off the switch and unplug the vacuum cleaner from the electrical outlet and conduct safety and maintenance checks. Allow the cleaner to cool for approximately 60 minutes. To re-start, plug into a power point and switch back on.

# MACHINE OVERVIEW

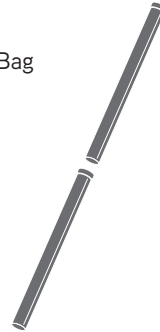
## WHATS INCLUDED WITH YOUR MACHINE



Floor Tool



Reusable Dust Bag



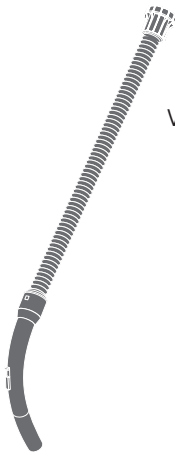
Plastic Wand



Crevice Tool



Disposable  
Dust Bag x2



Vacuum Hose



Hose Connection

Canister

Harness

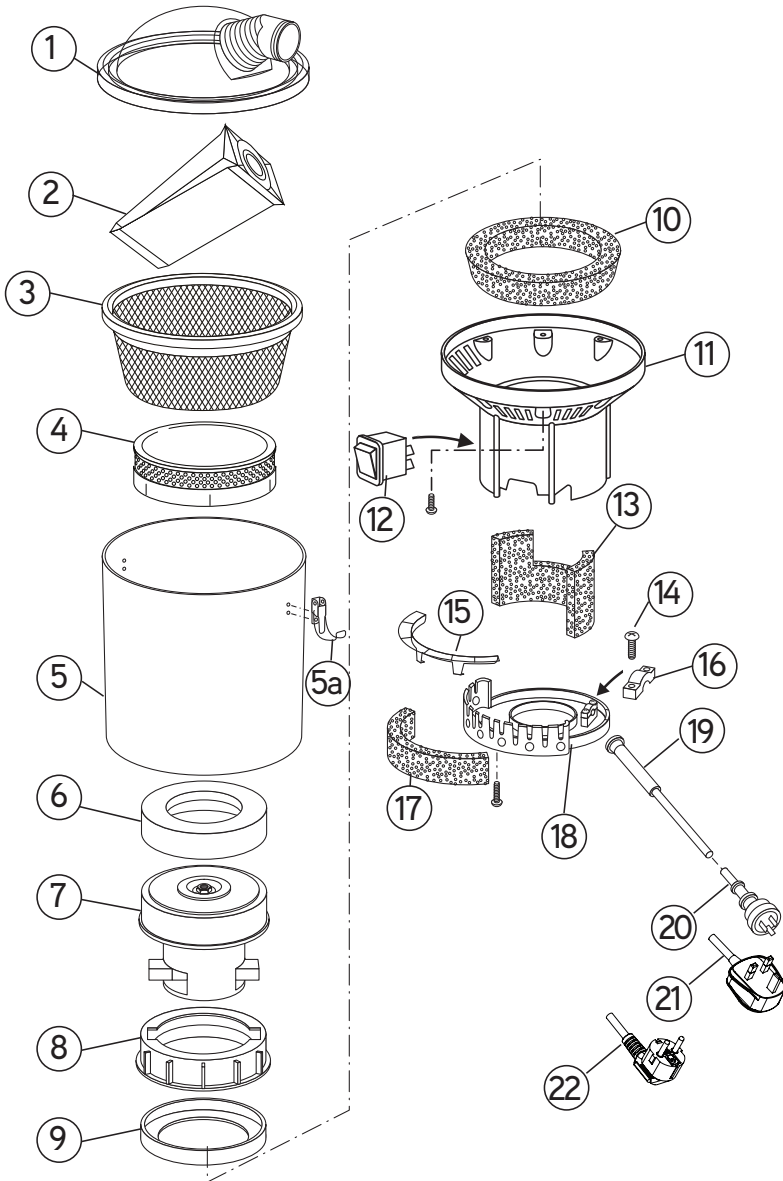
Filter

# MACHINE PARTS

**Quote these part numbers when ordering spare parts**

<b>No. Part Name</b>	<b>Part No.</b>
1. Lid - Plastic - Clear - 270mm	VXLID001
2. Dust Bag - Disposable - SMS - Sealed - Pkt 5	VXDUB005
3. Dust Bag - Reusable - SMS - Bucket - Pkt 1	VXDUB006
4. Filter - Pre-Motor - Cartridge - Hi-Flow	VXFIL002
5. Canister - Thrift 650	VXCAN002
5a. Latch - Aluminum - Silver - 65mm	VXLAT001
6. Gasket - Motor - Foam - 145mm	VXGAS010
7. Motor - Single Stage - Flow Through - 240V - 1300W	VXMOT005
8. Spacer - Motor - Plastic - 145mm	VXSPA002
9. Gasket - Motor - Rubber - 150mm	VXGAS007
10. Insulation - Noise - Foam - 180mm	VXINS008
11. Intermediate Housing - Insert - Blank - Grey	VXINH004
12. Switch - On-Off - Non-Illuminated - Black	VXSWI001
13. Insulation - Motor - Foam - 420mm	VXINS009
14. Screw - Aluminum - 1mm x 9mm	VXSCR007
15. Cage - Motor Filter - Plastic - Blue	VXCAG002
16. Clamp - Cable - Plastic - White - 34mm	VXCLA001
17. Filter - Exhaust - Flat - Foam	VXFIL004
18. Bottom Cap - Plastic - Black - 175mm	VXBOT001
19. Short Lead - Hard Wired - 420mm - 3C - Plug Type I	VXSHL003
20. Extension Lead - 18m - 3C - Plug Type I	VXEXL001
21. Power Cord - Hard Wired - 18m - 3C - Plug Type G	VXPWC021
22. Power Cord - Hard Wired - 18m - 3C - Plug Type E/F	VXPWC022

# MACHINE PARTS



# HARNES AND ACCESSORY PARTS

**Quote these part numbers when ordering spare parts**

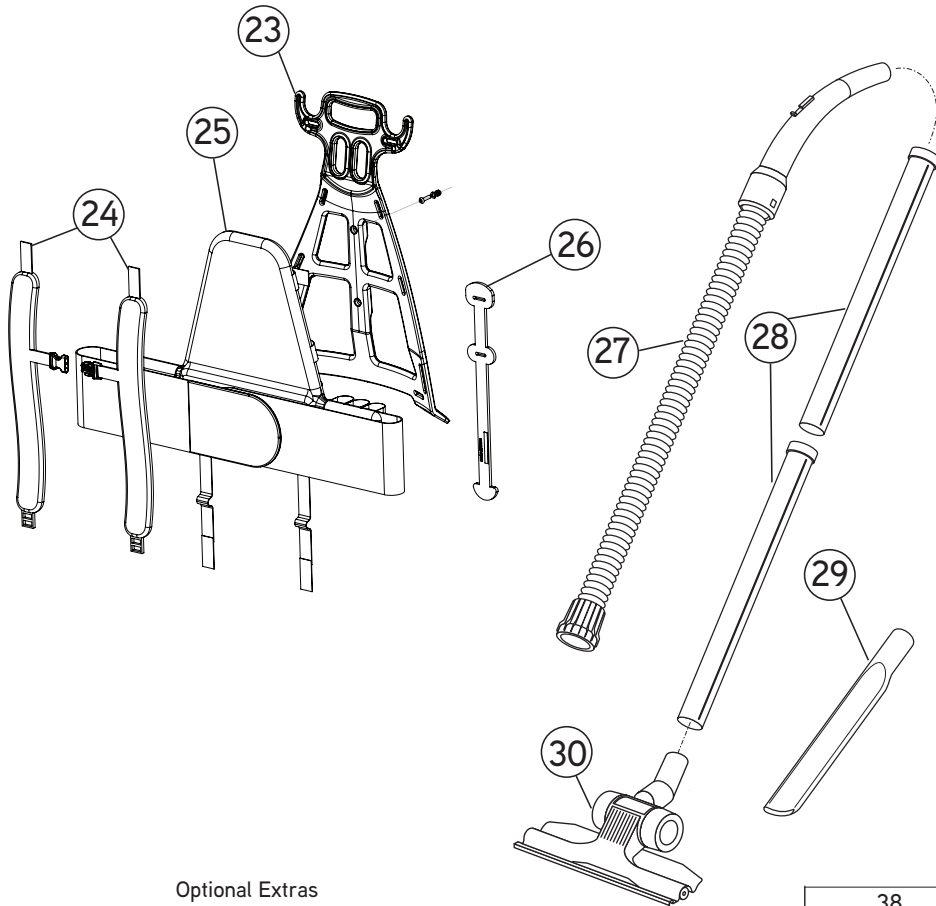
<b>No. Part Name</b>	<b>Part No.</b>
23. Frame - Backpack - Plastic - Black - 530mm	VXFRA001
24. Strap - Shoulder - Padded - Black - Pkt 2	VXSTP003
25. Harness - Padded Back - Elastic Velcro Hip Band	VXHAR001
26. Cord Restraint - Rubber	VXCOR001
27. Hose Assembly - 32mm - 1.2m - Screw Fit	VXHOA002
28. Wand - Two Piece - Plastic - 32mm	VXWND003
29. Accessory - Crevice Tool - 32mm	VXACC002
30. Floor Tool - All Purpose - 32mm - 285mm	VXFLT002

## **Optional Extras**

31. Floor Tool - Combination - 32mm - 270mm	VXFLT003
32. Floor Tool Fitting - Plate - 270mm	VXFLF001
33. Floor Tool - Hard Surface - 32mm - 300mm	VXFLT005
34. Dust Bag - Disposable - SMS - Sealed - Pkt 5	VXDUB005
35. Floor Tool - Turbo Head - 32mm - 280mm	VXFLT007
36. Hand Piece - 32mm - Chrome	VXHAP003
37. Extension Lead - 20m - 3C - Plug Type I	VXEXL002
38. Wand - Telescopic - Chrome - 32mm	VXWND001



# HARNESS AND ACCESSORY PARTS

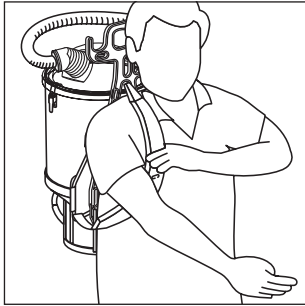


Optional Extras

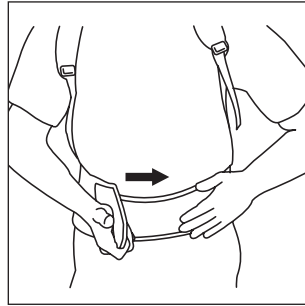
31	32	33	34	38
35	36	37		

# PREPARATION

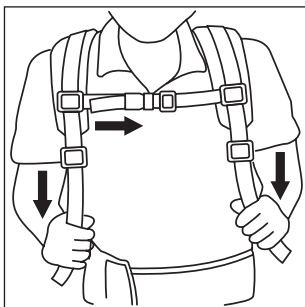
## HOW TO WEAR THE BACKPACK CORRECTLY



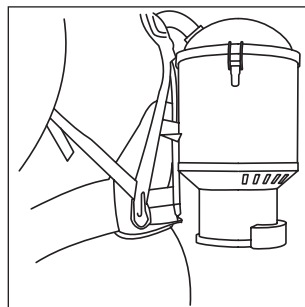
- Rotate the dome lid to suit left or right handed vacuuming.
- Loosen the shoulder straps.
- Adjust the length at top of shoulder strap (if required).
- Lift the backpack by one shoulder strap.
- Then slide your free arm into the other strap.



- Tighten the hipband so the machine rests comfortably on your hips.



- Pull down on shoulder straps for a comfortable fit.
- Adjust position and connect chest strap to secure backpack.



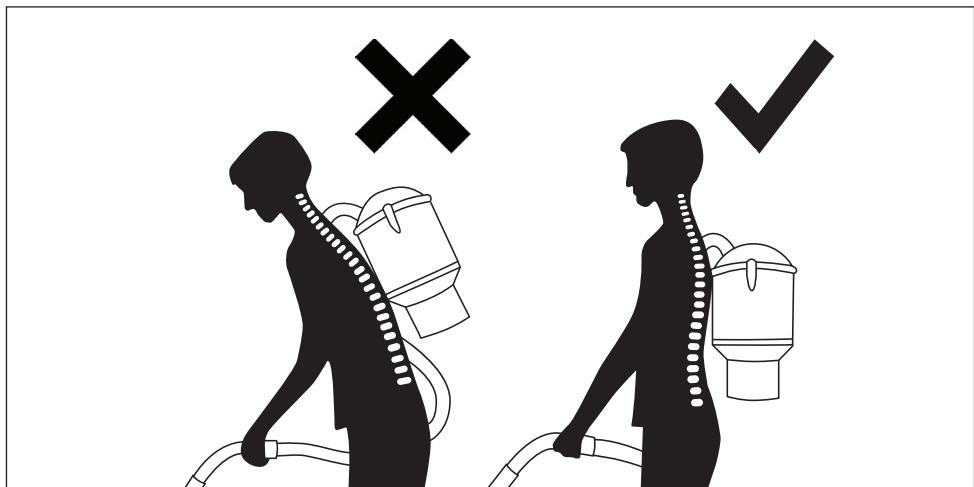
- Make sure the harness is resting on your hips.

**IMPORTANT TIP:** If the backpack feels heavy or uncomfortable, it is likely you are not wearing it correctly. Contact Vax for further advice.

# PREPARATION

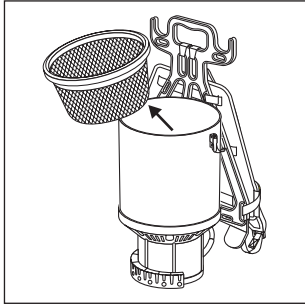
## HOW TO VACUUM EASIER AND FASTER WITH NO BACK STRAIN

1. Stand upright, with the hand piece section parallel to the floor.
2. Hold the wand/hose with one hand at a comfortable arm's length.
3. Use easy underarm swinging motion when detail cleaning and short dabs when spot cleaning, always standing upright.
4. Remove backpack by sliding the one of the straps off the shoulder, while raising the other arm/shoulder to hold strap in place. Slowly lower the shoulder and lower the backpack to the floor, do not drop.
5. If work is completed disconnect power cord from power point then wind from the backpack towards the end of the power cord to reduce likelihood of cable twists. In the process check for nicks, cuts, fractures, and knots.

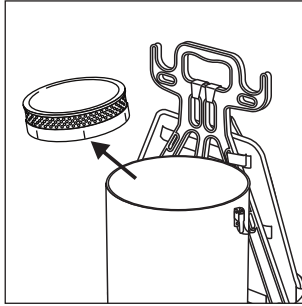


# MAINTENANCE

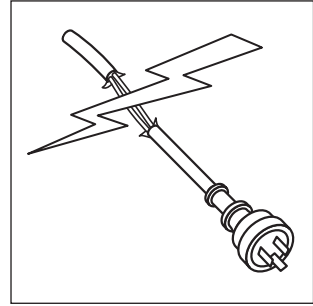
## AFTER EACH USE:



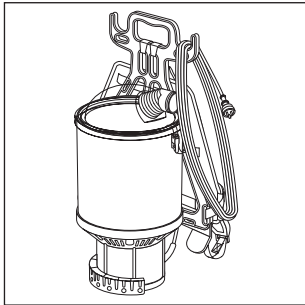
Remove filter, empty dust container and clean dust bag.



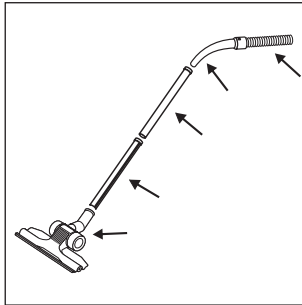
Remove pre-motor filter and tap gently to clean filter.



Check all power cords for cuts, abrasions and exposed wiring.



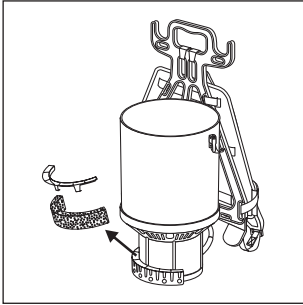
Wind up power cord from machine end. Store power cord as shown.



Check the floor tool, wand and hose for any obstructions.

# MAINTENANCE

## REGULAR CHECKING



Remove and clean external motor filter.

**NOTE:** Any other servicing should be performed by an authorised technician.

# TROUBLESHOOTING

## PROBLEM

Backpack not working

## CAUSE

- Power cord not firmly plugged into power point.
- Backpack shuts off due to high motor temperature.
- Circuit breaker or RCD has tripped.

## SOLUTION

- Check all plugs and sockets are firmly plugged in.
- Turn main switch off and unplug the backpack. After 60 minutes the backpack should be ready for use. If not contact Vax for your nearest Authorised Vax Service and Warranty Agent.
- Check the machine is in good working order. If OK, reset circuit breaker or RCD. If circuit breaker or RCD trips again contact your nearest Authorised Vax Service and Warranty Agent.

# TROUBLESHOOTING

## PROBLEM

Backpack has no/poor suction

## CAUSE

- Dust bag full.
- Dust bag not installed correctly.
- Hose not installed correctly.
- Blockages.
- Filters blocked.

## SOLUTION

- Remove, empty and clean dust bag.
- Remove and reinsert the dust bag making sure the rubber edging is correctly fitted around the canister. For the disposable dust bag, ensure it is firmly sealed around the inlet.
- Reconnect hose and ensure correctly sealed.
- Remove hose, wand and floor tools; remove any blockages.
- Clean pre-motor and post motor filter.

# SERVICE AND HELP

## VAX SERVICE & HELP

Australia 1300 VAX AUS (1300 829 287)  
New Zealand 1300 VAX NZL (0800 829 695)  
Monday-Friday 8.30am to 5.00pm

Any queries or concerns about using the vacuum cleaner, please contact the Vax Commercial Careline. Calls are charged at the Australian / New Zealand local rate. Please make a note of the model and serial numbers before calling.

For the nearest service agent, please call the Vax Careline or **visit [vax.com.au](http://vax.com.au)**

## Technical Specification

Model Number: VXCB-01  
Volts / Frequency: 220-240V~50Hz  
Motor: 1300W Single Stage Flow Through  
Noise Level: 66dB(A) ± 3dB(A) (at 1.5m)  
Filtration: 4 stage, hi-flow filter  
Volumetric Airflow  
(per second): 39.5 litres  
Capacity: 5 litres  
Weight: 4.8kg (excluding power cord assembly and hose)  
Cord length: 18meters

Subject to technical change without notice.



Double  
Insulated



This product  
meets applicable  
regulatory  
requirements



Indoor  
Use



Read  
Instructions



# NOTES

# NOTES

# NOTES



**Distributed by**

**Techtronic Industries Australia Pty Ltd**

31 Gilby Road, Mount Waverley, VIC 3149, Melbourne, Australia  
Careline AU: 1300 VAX AUS (1300 829 287) [www.vax.com.au](http://www.vax.com.au)

**Techtronic Industries N.Z. Limited**

2 Landing Drive, Mangere, Auckland, 2022, New Zealand  
Careline NZ: 0800 VAX NZL (0800 829 695) [www.vax.co.nz](http://www.vax.co.nz)