

**vax**<sup>®</sup>

**Pet**  
VACUUM CLEANER

**CYCLONIC  
BARREL  
VACUUM**



LET'S GET STARTED.

**2 YEAR WARRANTY**

**VX38**

[vax.com.au](http://vax.com.au)  
[vax.co.nz](http://vax.co.nz)

## Let's talk safety



### Basic safety precautions

**This vacuum cleaner is intended for household use only and NOT for commercial or industrial use.**

### **READ ALL THE INSTRUCTIONS BEFORE USING THIS APPLIANCE**

- Only use the vacuum cleaner indoors and keep the area you're cleaning well lit.
- Keep fingers, hair and loose clothing from moving parts and openings whilst using the vacuum cleaner.
- This appliance is not intended for use by persons (including children) with reduced physical, sensory or mental capabilities or lack of experience and knowledge unless they have been given supervision or instruction concerning use of the appliance by a person responsible for their safety.



### Don'ts

- Do not pull or carry by cord, use cord as a handle, close a door on cord, or pull cord around sharp edges or corners. Do not place product on cord. Do not run appliance on cord.
- Don't handle the plug or use the vacuum cleaner with wet hands.
- Don't use the vacuum cleaner with incorrect voltage as this may result in damage or injury to the user. The correct voltage is listed on the rating label.
- Don't vacuum up hot coals, cigarette butts, ash, matches or smoking hot burning items or use in an area where there may be harmful fluids (chlorine, bleach, and ammonia drain cleaner).



### Do's

- Always make sure the filter and dirt container are fitted correctly before using your vacuum cleaner.
- Turn off all controls on the vacuum cleaner before disconnecting or connecting the battery.
- Take extra care when cleaning on the stairs.
- Always switch off the vacuum cleaner before disconnecting or connecting the hose and accessories.
- Always protect the charger cord from heated surfaces or near open flames.

Children should not play with the vacuum cleaner. Cleaning and user maintenance should not be made by children without supervision

- Only Vax recommend tools and accessories should be used with this vacuum cleaner
- Vax recommends the use of a Residual Current Device rating of 30 mA or less.
- If the supply cord is damaged, it must be replaced by the manufacturer, or similarly qualified person in order to avoid a hazard, or invalidating the warranty.
- **IMPORTANT:** The motor is equipped with a thermal cut-out. If for any reason the unit should overheat, the thermostat will automatically turn the unit off. Should this occur, unplug the vacuum cleaner from the electrical outlet and turn off the switch. Remove dirt container and empty. Clean filters. Allow the unit to cool for approximately one (1) hour. To re-start, plug into an electrical outlet and switch back on.

- Don't attempt to remove blockages with sharp objects as this may cause damage to the vacuum cleaner.
- Do not vacuum hard or sharp objects such as glass, nails, screws or coins etc.
- Don't not vacuum plaster dust, concrete dust or any other building or vitreous material.
- Do not vacuum flour, baking soda or any other powder-based carpet refresher or deodoriser.
- Don't use this vacuum cleaner if it has been dropped, damaged or left outdoors.
- Don't vacuum up any flammable or combustible materials (lighter fluid, petrol, kerosene etc.) or use the vacuum cleaner in an area with explosive vapours or liquid.

- Use only SAA approved 10amp extension cords. Care should be taken to arrange the extension cord as it can be a trip hazard.
- Always carry the vacuum cleaner by the handle.
- Store your vacuum cleaner in a cool, dry area.
- Always keep the power cord away from the brushes whilst using your vacuum cleaner.

**PLEASE KEEP INSTRUCTIONS FOR FURTHER USE.**

# Thank you for buying this Pet Barrel Vacuum.

## Taking care of your carpets and hard floors

The Pet Barrel Vacuum is designed to make vacuuming carpets and hard floors regularly as effective and efficient as possible and this user guide will help you get the most out of your machine. Maintaining your carpets will ensure they keep their appearance for longer. You've chosen the carpets and hard floors for your home for a reason and Vax will help you take good care of them.

## Taking care of your Pet Barrel Vacuum

Also inside this guide are instructions on maintaining your new machine, so that it's always ready when you are to tackle your carpets and hard floors.

## We're here if you need us

The Vax logo is displayed in a bold, orange, sans-serif font. The letters 'v' and 'a' are lowercase, while 'x' is uppercase. A registered trademark symbol (®) is located at the top right of the 'x'.

For troubleshooting simply visit or call:

**Australia: 1300 361 505\***

**vax.com.au**

**New Zealand: 0800 800 900\***

**vax.co.nz**

\*Monday – Friday: 8:30am -5:00pm

Calls are charged at the standard local rate. Please make note of the serial number and model number of the product before calling.

# Contents

## Pet Barrel Vacuum

Let's talk safety

Getting to know your machine

Getting started

Using your machine

Taking care of your machine

What to do if it goes wrong

Getting in touch

Accessories

Notes

## Filters



Pre-motor filter



HEPA post-motor filter

## Included with your machine



Hose and handle



Dusting brush



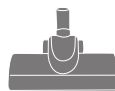
Crevice tool



Upholstery tool



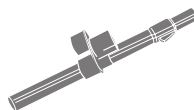
Combination floor head



Turbobrush



Hard floor tool



Extension tube and tool caddy

# Getting to know your machine

Carry handle

Dirt container lid

Dirt container

Cyclone separator and shroud

Hose connector

Cord rewind button

Variable power dial

On/off button

Wheel

## Technical Specification

Name **Pet Barrel Vacuum**  
Voltage **220-240V ~ 50Hz**  
Wattage **2000W**  
Cord length **7m**  
Weight **5.5kg**

## Accessories & Consumables

Filter pack\*  
**VCP6BFLT**



Double Insulated



This product meets applicable regulatory requirements



Indoor Use



Read Instructions

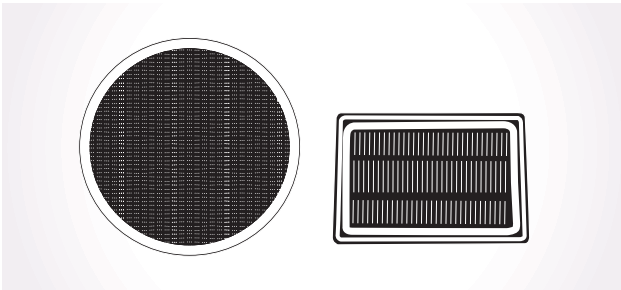
**PLEASE READ 'LET'S TALK SAFETY' AT THE BEGINNING BEFORE USE**

**CAUTION:** Always switch off the vacuum cleaner before connecting or disconnecting the hose/attachments, or removing and emptying the dirt container.

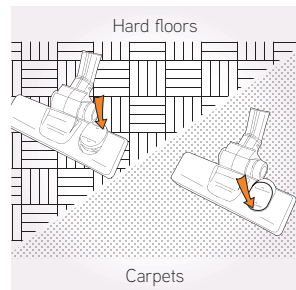
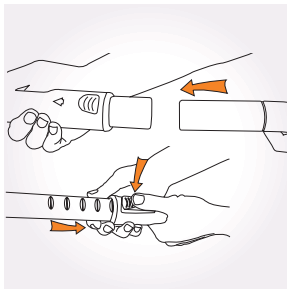
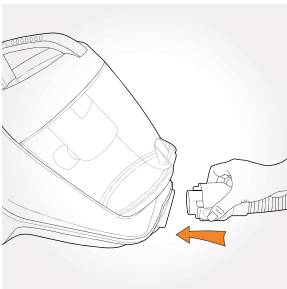
## Keep you Vax like new

**IMPORTANT:** The condition of the filters affects the performance of your machine. Please check, clean and replace filters periodically (depending on the level of use). For full cleaning instructions, see "Cleaning the pre-motor filter" and "Cleaning the post-motor filter".

**IMPORTANT:** Do not use the vacuum cleaner with blocked filters and without all of the filters in place.



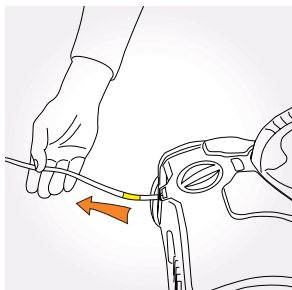
## Assembling your vacuum cleaner



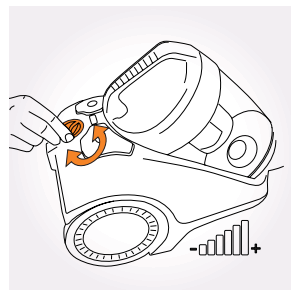
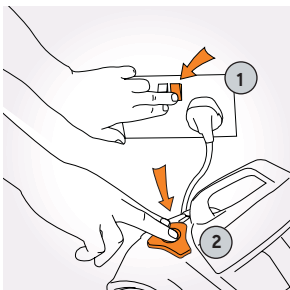
**NOTE:** The Turbobrush, hard floor tool, crevice tool, upholstery tool and dusting brush can all be attached directly to the telescopic tube or hose handle.

# Using your machine

## Operating the appliance



Fully unwind the power cord.  
A yellow mark on the cord indicates the recommended cord length. Do not exceed the cord length beyond the yellow mark.



Adjust the variable power dial to increase or decrease the suction.

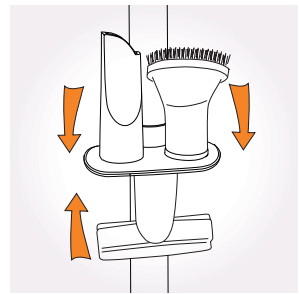
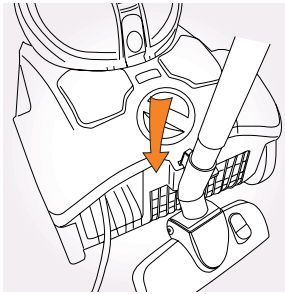
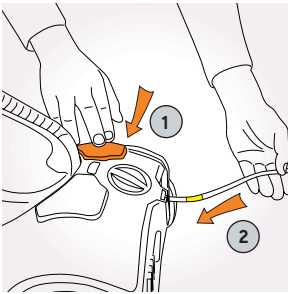


# Taking care of your machine

**WARNING:** Always switch off and unplug the vacuum cleaner from the electrical socket before assembling, opening or emptying the dirt container or before connecting/disconnecting the attachments.

**IMPORTANT:** Filters need to be cleaned **everytime you empty the dirt container** for best cleaning results. Do not use your vacuum cleaner with blocked filters and without ALL the filters in place.

## Packing away and storage



**NOTE:** For convenience there is a parking slot located at the rear of the vacuum cleaner where the floor head and tubes can be attached for storage and carrying.

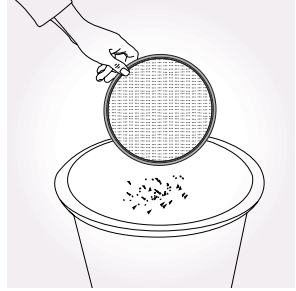
## Emptying and cleaning the dirt container



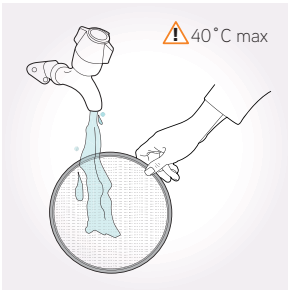
# Taking care of your machine

## Cleaning the pre-motor filter

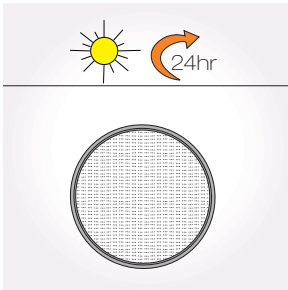
**IMPORTANT:** Water temperature should not exceed 40°C when washing the pre-motor filter. Allow to dry completely before replacing in the vacuum cleaner.



Tap to remove excess dirt for a quick clean.



Wash when a deeper clean is needed.

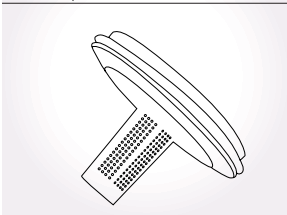
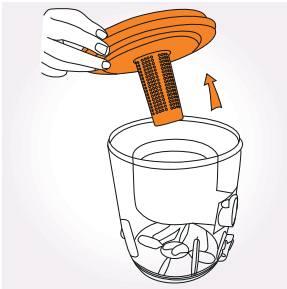


# Taking care of your machine

**NOTE:** The shroud is accessed by removing the dirt container lid and is located underneath the pre-motor filter.

**IMPORTANT:** Water temperature should not exceed 40°C when washing the shroud. Allow to dry completely before replacing in the vacuum cleaner.

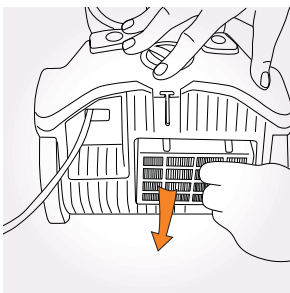
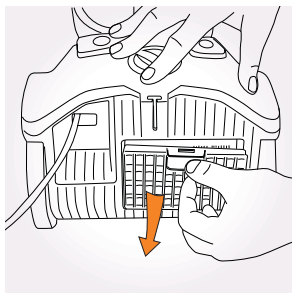
## Cleaning the shroud



# Taking care of your machine

## Cleaning the post-motor filter

**WARNING:** Do not wash post-motor filter.



Tap to clean.

## Clearing blockages

**WARNING:** To reduce the risk of electric shock, the power cord must be disconnected before performing maintenance/troubleshooting checks. Turn the vacuum cleaner off and unplug from the electrical socket.

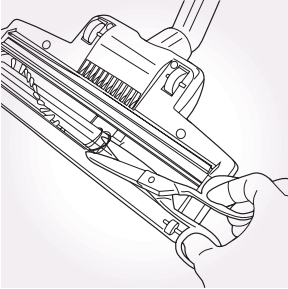
### Hose blockages

The flexible hose may be disconnected from the vacuum cleaner. Carefully remove any blockages found and reconnect the hose securely.

### Accessory blockages

Remove accessory from the hose/telescopic tube. Carefully remove the blockage and return to the cleaner.

## Removing blockages from the Turbobrush



Switch the vacuum cleaner off and disconnect the power plug from the electrical outlet.

Lay the Turbobrush on a flat surface and turn over to expose the brushbar. Using a pair of scissors, cut through any threads or hairs caught around the brushes and brushbar.

# What to do if it goes wrong

## Problem

## Solution

There is an accessory missing.

- Check the 'Contents' page in this guide to make sure the part is definitely included in your unit.
- If it is missing, we're here to help. Simply call us on **AUS: 1300 361 505 / NZ: 0800 800 900**

Why won't the vacuum cleaner pick up?

- The dirt container may be incorrectly installed; remove the dirt container from the unit by pressing the dirt container release catch and then re-attaching it to the unit, ensuring it is locked firmly back into place.
- The filter may be clogged; refer to 'Taking care of your machine'.
- The dirt container may be blocked; refer to 'Taking care of your machine – Cleaning the shroud'.

Why is dust escaping from the vacuum?

- The filter may be clogged; refer to 'Cleaning the pre/post filter'.
- The dirt container may be blocked; refer to "Taking care of your machine – Cleaning the shroud".
- The dirt container may be incorrectly installed; remove the dirt container from the unit by pressing the dirt container release catch and then re-attaching it to the unit, ensuring it is locked firmly back into place.

What do I do if the unit/ an accessory becomes damaged or broken?

- We're here to help. Simply call **AUS: 1300 361 505 / NZ: 0800 800 900** or visit **vax.com.au**

Why won't the accessories pick up properly?

- **Hose blockages:** remove the hose from the unit. Carefully remove any blockages found and reconnect hose securely.
- **Accessory blockages:** remove accessory from handle/tube. Carefully remove blockage and re-attach to the vacuum cleaner.
- The accessory may be faulty. Simply call us on **AUS: 1300 361 505 / NZ: 0800 800 900** for assistance.

Why will the vacuum cleaner not run?

- It may not be plugged into the electrical outlet correctly; ensure that the plug is pushed in securely.
- The electrical outlet may not be working properly; check the fuse or breaker, or consult an electrician.
- The motor thermostat may have tripped; switch off and unplug the vacuum cleaner, and leave for one hour before switching the cleaner back on.

**CAUTION:** To reduce the risk of personal injury, unplug the product before performing maintenance/troubleshooting checks.

## Taking care of you

We're here if you need us. For trouble shooting, simply call or visit:

**Australia: 1300 361 505\***

**vax.com.au**

**New Zealand: 0800 800 900\***

**vax.co.nz**

\*Monday-Friday 8.30am to 5.00pm

# Don't forget your accessories!

Order at: [www.vax.com.au](http://www.vax.com.au) / [www.vax.co.nz](http://www.vax.co.nz)

### Pro Cleaning Kit

Model no. VPCK

#### Crevice tool

For awkward gaps and crevices.

#### Upholstery attachment

Gently cleans large areas of upholstery, curtains, sofas and chairs.

#### Pet hair removal attachment

Tackles stubborn pet hair on furniture, rugs and carpets.

#### Stubborn dust brush attachment

Removes built up dust from skirting, banisters and corners.

#### Radiator Tool

Long slim design, is perfect for cleaning behind and inside the radiator.



#### Up Top Tool

Ideal for reaching those hard to reach high areas.



#### Mattress Tool

Quickly and easily removes embedded dust from mattresses.



#### Soft Brush

Gently removes dust and dirt from delicate surfaces such as tiles and glass without scratching.



### Filter Pack

Model no. VCP6BFLT

Includes pre-motor filter and pre-motor filter.









## Notes



**vax**<sup>®</sup>

Distributed by Techtronic Industries Australia Pty. Ltd.  
31 Gilby Road, Mt Waverley, VIC 3149 Australia.  
Careline AU: 1300 361 505 [www.vax.com.au](http://www.vax.com.au)  
Careline NZ: 0800 800 900 [www.vax.co.nz](http://www.vax.co.nz)