

vax

20L Wet & Dry
MULTIFUNCTION CLEANER

20L WET & DRY
MULTIFUNCTION
CLEANER



LET'S GET STARTED.

2 YEAR WARRANTY

VX49

vax.com.au
vax.co.nz

Let's talk safety



Basic safety precautions

This machine is intended for household use only, and NOT for commercial or industrial use.

WHEN USING THE VACUUM CLEANER:

Basic safety precautions should always be observed, including the following:

- Do not leave the vacuum cleaner unattended when plugged in. Unplug it from the socket when not in use.
- Not to be used as a toy.
- Children should be supervised to ensure that they do not play with the appliance.
- This appliance is not intended for use by persons (including children) with reduced physical, sensory or mental capabilities, or lack of experience and knowledge, unless they have been given supervision or instruction concerning the use of the appliance by a person responsible for their safety.
- Use only as described in this manual. Use only Vax recommended attachments.
- Do not use the vacuum cleaner if it has been dropped, damaged, left outdoors or dropped into water. Do not use the vacuum cleaner with a damaged cord or plug. If the supply cord is damaged, it must be replaced by the manufacturer or a recommended service agent to avoid a hazard.



Don'ts

- Do not handle the plug or machine with wet hands.
- Do not leave outdoors.
- Do not pull or carry by cord. Do not use cord as a handle, close a door on the cord or pull cord around sharp edges or corners. Do not run the machine over the cord. Keep the cord away from heated surfaces.
- Do not put any objects into openings or operate with openings blocked. Keep them free of anything that might reduce airflow.
- Keep hair, loose clothing, fingers and all parts of body away from openings and moving parts.
- Do not pick up hot coals, cigarette butts, ash, matches or any hot, smoking or burning objects.
- Do not use the vacuum without the filters in place.
- Turn off all controls before unplugging.
- Do not vacuum up harmful or toxic material (chlorine, bleach, ammonia, drain cleaner etc.).
- Do not vacuum up hard or sharp objects such as glass, nails, screws, coins, etc.
- Do not vacuum baking soda or any other powder-based carpet refresher or deodoriser.
- Do not vacuum plaster dust, concrete dust or any other building or vitreous material.



Do's

- Use only approved 10 amp extension cords. Care should be taken to arrange the cord so that the cord cannot be tripped over. Only use a weatherproof 10 amp extension cord when using in wet mode.
- Store the vacuum cleaner in a cool, dry area.
- To prevent dirty water from running into motor, do not hold the appliance upside-down or lay on its side. Use appliance in normal vacuuming position.
- Take extra care when cleaning on stairs.
- Turn off the on/off switch before unplugging the vacuum cleaner.
- Do not carry appliance while motor is running.
- We recommend the use of a residual current device with a residual current rating of 30mA or less.

WHEN USING BLOWER FUNCTION:

- Direct air discharge at work area only – never at people or animals.
- Do not use blower as a sprayer in wet mode.
- Wear a dust mask and protective eye wear.

WARNING

Always switch off and unplug the machine from the electrical outlet before assembling, opening, emptying the dirt container, before connecting/disconnecting the attachments, or carrying out maintenance or troubleshooting checks.

WARNING

If the hose or tools are blocked, switch off the cleaner and remove the blockage(s) before re-starting your machine.

WARNING

Cleaning filters and replacing them regularly maintains vacuum performance. Vax recommends that your filters should be checked, cleaned and replaced periodically.

DAMAGE TO THE VACUUM CLEANER CAUSED AS A DIRECT RESULT OF NOT ADHERING TO THE GENERAL SAFETY INFORMATION AND THE INSTRUCTIONS IN THIS USER GUIDE INVALIDATES THE WARRANTY.

PLEASE KEEP THESE INSTRUCTIONS FOR FURTHER USE.

If servicing of this product is required, it should only be performed by a qualified service agent. Please visit the Vax website for a most up to date list of vax service agents or contact our Customer Care Line on: AU: 1300 361 505 / NZ: 0800 800 900 (Mon-Fri 8:30am to 5:00pm)

vax.com.au / vax.co.nz

Thank you for buying this Multifunction Cleaner.

The VX49 is a powerful 20L Wet & Dry Multifunction cleaner ideal for both wet and dry pick-ups. Featuring easy to manoeuvre castor wheels, this cleaner can be used both in the home and garage, making it ideal for any home.

Taking care of your 20L Wet & Dry Multifunction Cleaner

Inside this guide are instructions on maintaining your new machine, so it's always ready when you are to tackle cleaning jobs throughout your home and garage.

We're here if you need us

The Vax logo is displayed in a bold, orange, sans-serif font.

For troubleshooting simply visit or call:

Australia: 1300 361 505*

vax.com.au

New Zealand: 0800 800 900*

vax.co.nz

*Monday – Friday: 8:30am -5:00pm

Calls are charged at the standard local rate. Please make note of the serial number and model number of the product before calling.

Contents

Let's talk safety

Getting to know your machine

Getting started

Using your machine

Taking care of your machine

What to do if it goes wrong

Getting in touch

Accessories / Notes

Multifunction Cleaner

Included with your machine



3 Extension Tubes



1 Crevice Tool



1 Foam Filter



1 Dry Filter

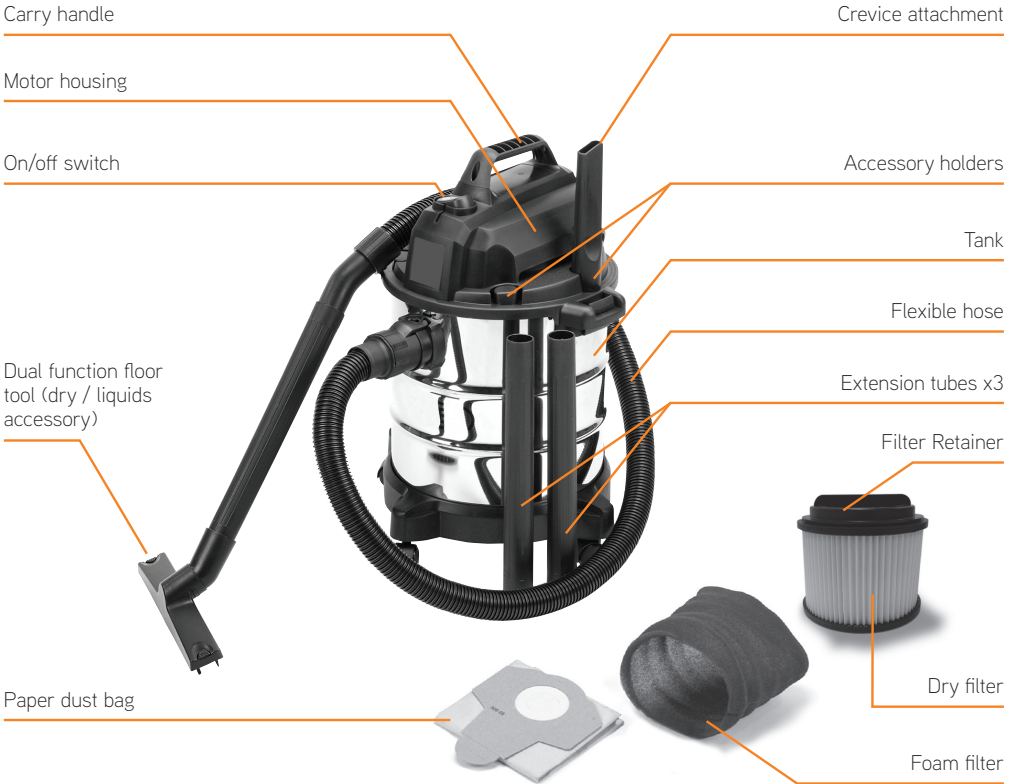


1 Paper Dust Bag



1 Dual Function Floor Tool

Getting to know your machine



Technical Specification

Name **Wet & Dry Canister**
Voltage **220-240V ~ 50/60Hz**
Wattage **1250W**
Tank capacity **20 Litres**
Vacuum Pressure **14kpa**
Sound Pressure **80dB(A)**
Cord length **8m**
Weight **5.1kg**



Double Insulated



Read Instructions

IP24

Subject to technical change without notice.

*To purchase consumables and accessories, please visit vax.com.au

PLEASE READ 'LET'S TALK SAFETY' AT THE BEGINNING BEFORE USE

Assembling your wet & dry vacuum cleaner

WARNING: To reduce the risk of personal injury, unplug the vacuum cleaner when assembling.



Place the tank upside down and firmly press the four caster wheels into the base of the tank.



Place the top motor housing cover onto the main tank and secure into position with the retaining clips on each side. Use the screws provided to attach the motor housing handle.



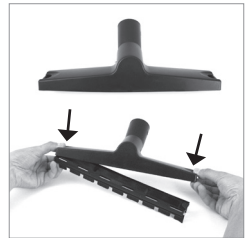
Push the flexible hose into the connector and twist slightly clockwise. To remove the flexible hose, twist house anticlockwise and pull.



Attach the 3 piece wand to the end of the hose and then the dual function floor tool to the end of the wand.



Use bristles on the floor tool for hard surfaces.



For soft surfaces such as carpet, remove bristles by pressing the 2 clips down.

Using your machine

SETUP the Cleaner from WET to DRY Vacuuming

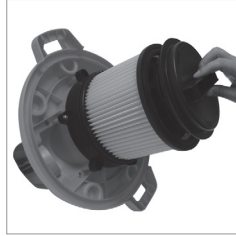
NOTE: Empty the tank and dispose of any liquid which may have been picked up in wet mode.



Remove the foam filter.
Dry off any excess moisture from the float cage.



Attach the dry filter beneath the motor housing by pushing it on.
(This dry filter must ALWAYS be used in dry vacuuming mode to help provide protection and avoid motor damage).



Once the dry filter has been pushed onto the float cage - align the filter retainer cap onto the base of filter and turn clockwise to lock into place.



Attach the paper dust bag to the inner side of the hose connector on the inside of the tank as shown.
Push the bag on to the hose connector.

NOTE: as the suction power decreases, this may indicate that the paper dust bag is full and needs replacing.



Place the top motor housing cover onto the main tank and secure into position with the two retaining clips.



Connect the vacuum cleaner to the power supply and switch ON by pushing the on/off switch "I".

SETUP the Cleaner from DRY to WET Vacuuming

NOTE: Empty the tank and dispose of any dirt/dust which may have been picked up previously in dry mode.



Remove the dry filter and replace it with the foam filter – this slides over the float cage as shown.



Remove dust bag from tank.



Place the top motor housing cover onto the main tank and secure into position with the two retaining clips.

IMPORTANT: Never vacuum dry dust and dirt with just this foam filter fitted as it will provide little or no protection, resulting in motor damage. To be used in wet mode only.



When vacuuming up fluids – the crevice nozzle can be used when the water level is too high to use the floor tool. To ensure the air flow is adequate, we recommend that the end of the nozzle is not totally immersed.



When the fluids have reached the maximum tank capacity, the float regulator will cover the motor filter causing the motor to work harder and it will become noticeably noisier. At this point turn off the machine and unplug it from the mains power and empty the tank.



Once the water tank is emptied, place the top motor housing cover back onto the main tank and secure into position with the two retaining clips.



Connect the vacuum cleaner to the power supply and switch ON by pushing the on/off switch "I" to continue to vacuum in wet mode.

NOTE: Clean and dry the inside and outside of the machine before storage.

Using your machine

SETUP the Blower Function

WARNING: Keep bystanders clear from blowing debris (including persons and animals)

WARNING: Wear a dust mask and protective eye wear when using blower function .

IMPORTANT: Make sure the tank container is empty before using the blower.



Remove the hose from the standard hose outlet used for cleaning modes and place it on the blower outlet located at the back of the machine. Remove floor tool and connect the crevice nozzle to hose.



Connect the vacuum cleaner to the power supply and switch ON by pushing the on/off switch "I".

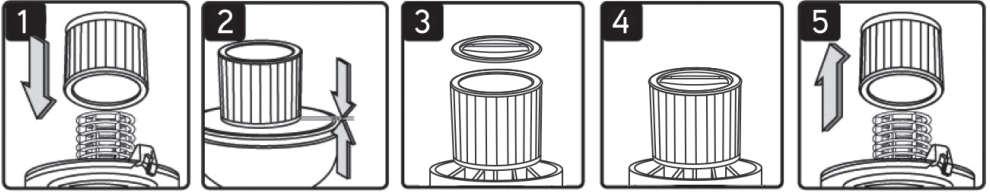
Taking care of your machine

Storage

NOTE: Before storing away, make sure to empty all contents of tank container.

NOTE: Make sure all parts, tank and filters are dry prior to storing machine.

Installing and cleaning the DRY filter



NOTE: Unplug machine from the power outlet before performing maintenance.

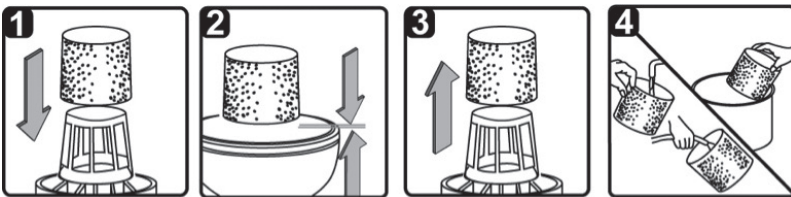
Installing Dry Filter

1. Install the dry filter over the filter cage with the flat end of the filter towards the vacuum power head. Carefully push filter in until it stops against the power head. (fig. 1 & 2)
2. Place filter retainer on top of cartridge filter over the raise lip and tighten down by turning retainer clockwise, do not over tighten. (fig. 3 & 4)

Removing and Cleaning Dry Filter (THIS FILTER IS NOT WASHABLE)

1. Unlock and remove the filter retainer by turning retainer handle anticlockwise.
2. Carefully hold and pull the dry filter up for removal. (fig. 5)
3. Clean the cartridge filter by gently tapping or brushing dirt off. For optimal performance it is recommended to regularly change this filter depending on level of use (eg. 3-6 months).
4. Install cleaned or new filter into place as instructed above.

Installing and cleaning the FOAM filter



NOTE: Unplug machine from the power outlet before performing maintenance.

Installing Foam Filter

1. Follow instructions to remove dry dust filter first before changing to foam filter.
2. Carefully slide foam filter down over the filter cage making sure the whole cage is covered. (fig. 1 & 2)

Cleaning Foam Filter

3. Carefully remove foam filter. (fig. 3)
4. Use a mild soap and water solution to wash foam filter and rinse with clean water. (fig. 4)
5. Allow filter to air dry before installing and using again.

What to do if it goes wrong

Problem

Solution

There is an accessory missing.

- Check the Parts Overview page in the guide to make sure the part is definitely included in your unit.
- If the part is missing we're here to help. Simply call us on:
AU 1300 361 505 / NZ 0800 800 900

The vacuum cleaner has no power?

- Unit may not be plugged into the electrical outlet correctly, ensure the plug is pushed in securely.
- The electrical outlet may not be working properly, check the fuse or breaker, or consult an electrician.
- The power cord may be damaged, if so it must be replaced by the manufacturer or Vax authorised agent in order to avoid invalidating the warranty.
- Tank is full of liquid
Solution: Empty the tank

What do I do if the unit/ an accessory becomes damaged or broken?

- Visit vax.com.au for parts and spares.
- Please call our Careline to purchase new spares or order a replacement.

Dust is escaping from the motor cover?

- The dust bag is missing or damaged
Solution: Put in a dust bag or replace it.

Low suction power and high motor speed / vibrations?

- Dust bag is full.
Solution: Replace the dust bag.
- Suction nozzle, hose, or tank inlet is blocked.
Solution: Check the suction nozzle, hose, and tank inlet for obstructions.

CAUTION: To reduce the risk of personal injury, unplug the product before performing maintenance/troubleshooting checks.

Taking care of you

We're here if you need us. For trouble shooting, simply call or visit:

Australia: 1300 361 505*

vax.com.au

New Zealand: 0800 800 900*

vax.co.nz

*Monday-Friday 8.30am to 5.00pm

Don't forget your accessories!

AU: www.vax.com.au / NZ: www.vax.co.nz

Paper dust bag
Model No. VX40B



Foam filter
Model No. VX40FW



Dry filter
Model No. VX40FD





vax

Distributed by Techtronic Industries Australia Pty. Ltd.
31 Gilby Road, Mt Waverley, VIC 3149 Australia.
Careline AU: 1300 361 505 www.vax.com.au
Careline NZ: 0800 800 900 www.vax.co.nz