



AirRevolve
PET

3 year
warranty

MULTI-ORIENTATION
CYLINDER VACUUM



VX29

vax.com.au
vax.co.nz

Let's talk safety



Basic safety precautions

Please keep instructions for further use and use only as instructed in this guide. This vacuum cleaner is intended for household use only and NOT for commercial or industrial use

- Only use the vacuum cleaner indoors on dry surfaces and keep the area you're cleaning well lit
- Keep fingers, hair and loose clothing away from moving parts and openings whilst using the vacuum cleaner



Don'ts

- ✗ Don't use this vacuum cleaner if it has been dropped, damaged or left outdoors
- ✗ Don't run over the power cord or use vacuum cleaner if the power cord or plug is damaged. Please contact our Customer Care Line on: AU: 1300 361 505 NZ: 0800 800 900 (Mon-Fri: 8.30am to 5pm)
- ✗ Don't handle the plug or use the vacuum cleaner with wet hands
- ✗ Don't pull or carry this vacuum cleaner by the power cord. Don't use the power cord as a handle, pull the power cord around corners, sharp edges or close a door over the power cord. Don't unplug vacuum cleaner by pulling on the power cord
- ✗ Don't vacuum plaster dust, concrete dust or any other building or vitreous materials.
- ✗ Don't vacuum flour, baking soda or any other powder-based carpet refresher or deodoriser.



Do's

- ✓ Turn off all controls on the vacuum cleaner before disconnecting or connecting the power cord
- ✓ Always keep the power cord away from the brushes whilst using your vacuum cleaner. After use always wrap the power cord around the cord clips provided
- ✓ Always make sure all filters are in place before use
- ✓ Always make sure the brushbar is set to hard floor when using your vacuum on the stairs and take extra care when positioning the vacuum cleaner on the stairs

- This appliance is not intended for use by children and persons with reduced physical, sensory or mental capabilities or lack of experience and knowledge, unless they have been given supervision or instruction concerning use of the appliance in a safe way and understand the hazards involved
- Only Vax recommended tools should be used with this vacuum cleaner
- Vax recommends the use of a Residual Current Device rating of 30mA or less
- If the supply cord is damaged, it must be replaced by the manufacturer, or similarly qualified person in order to avoid a hazard, or invalidating the warranty

- ✗ Don't vacuum up any flammable or combustible materials (lighter fluid, petrol, kerosene etc.) or use the vacuum cleaner in an area with explosive vapours or liquid
- ✗ Don't vacuum up hot coals, ash, cigarette butts, matches or smoking hot burning items or use in an area where there may be harmful fluids (chlorine, bleach, and ammonia drain cleaner)
- ✗ Don't attempt to remove blockages with sharp objects as this may cause damage to your vacuum cleaner
- ✗ Don't vacuum up hard or sharp objects such as glass, nails, screws or coins etc
- ✗ Don't use the vacuum cleaner with incorrect voltage as this may result in damage or injury to the user. The correct voltage is listed on the machine rating label

CAUTION: This hose contains electrical connections:

- Do not use to suck up water
- Do not immerse in water for cleaning
- The hose should be checked regularly and must not be used if damaged

- ✓ Always switch off the vacuum cleaner before disconnecting or connecting the hose and accessories
- ✓ Keep all openings clear and free from debris as this may affect the airflow/suction
- ✓ Use only SAA approved 10amp extension cords, non-approved extension cords may overheat. Care should be taken to arrange the extension cord as it could be a trip hazard
- ✓ Store the vacuum cleaner in a cool, dry area. If filters have been cleaned as per instructions in this user guide, ensure they are thoroughly dry before storing away

Thank you for buying this AirRevolve Pet.

Taking care of your carpets and hard floors

The AirRevolve Pet is designed to make vacuuming carpets and hard floors regularly as effective and efficient as possible and this user guide will help you get the most out of your machine. Maintaining your carpets will ensure they keep their appearance for longer. You've chosen the carpets and hard floors for your home for a reason and Vax will help you take good care of them.

Taking care of your AirRevolve Pet

Also inside this guide are instructions on maintaining your new machine, so that it's always ready when you are to tackle your carpets and hard floors.

We're here if you need us

For troubleshooting simply visit or call:

Australia: 1300 361 505*
vax.com.au

New Zealand: 0800 800 900*
vax.co.nz



Performance is everything.™

*Monday – Friday: 8:30am -5:00pm

Calls are charged at the standard local rate. Please make note of the serial number and model number of the product before calling.

Contents

AirRevolve Pet

Included with your machine

Let's talk safety

Getting to know your machine

Getting started

Using your machine

Taking care of your machine

Let's talk technical

What to do if it goes wrong

Getting in touch

Accessories

Notes



Accessory hose and handle



Powered head



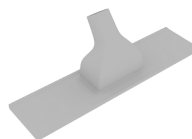
Dusting brush



Crevice tool



Upholstery tool



Hard floor tool



Telescopic extension tube & parking clip

Filters (housed inside cylinder)



Pre-motor filter



Pre-Motor sponge

Getting to know your machine

Castor wheel

Dirt container
release button

Hose entry point

Castor wheel

Cord rewind button

On/Off button

Carry handle

Wheel

Wheel

Separator and shroud

Technical Specification

Name **VAX AirRevolve Pet**

Model no. **VX29**

Wattage **750W**

Voltage **220-240V ~ 50Hz**

Cord length **6m**

Weight **5.2kg**

Capacity **1.2L**

Motorised Powerhead Attachment

Wattage **120W**

Voltage **220-240V ~ 50Hz**

Accessories & Consumables

Filter pack model no. **VX29F**

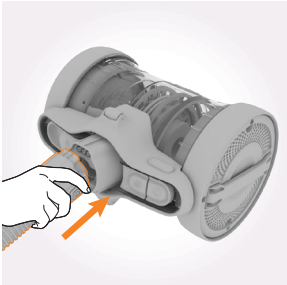
PLEASE READ 'LET'S TALK SAFETY' AT THE BEGINNING BEFORE USE

CAUTION: Always switch off the vacuum cleaner before connecting or disconnecting the hose/attachments, or removing and emptying the dirt container.

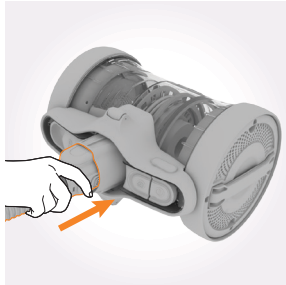
IMPORTANT: The vacuum cleaner is equipped with a thermal cut-out. If for any reason the vacuum cleaner does overheat the thermostat will automatically turn the vacuum cleaner off. If this happens, switch the vacuum cleaner off and unplug. Remove and empty the dirt container also check the vacuum cleaner for blockages. Allow the vacuum cleaner to cool for approximately 1 hour (if you have cleaned the filter please wait at least 24 hours for the filter to fully dry before putting back into the machine).

If the vacuum cleaner is blocked, switch off and unplug before removing the blockage.

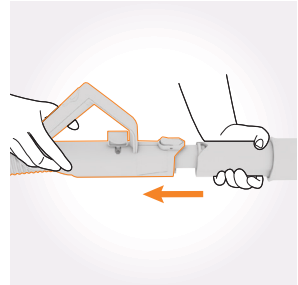
Assembling your vacuum cleaner



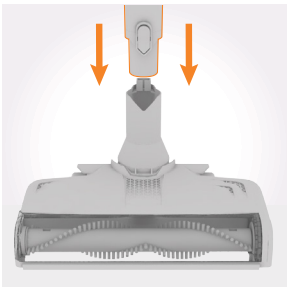
Line up hose connector with hose entry point. Squeeze both buttons on either side of hose connector.



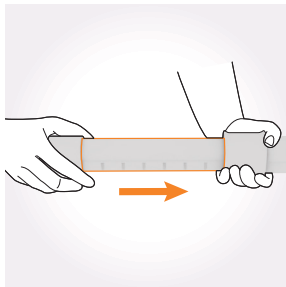
Push hose connector into hose entry point until hose connector clicks and locks into place.



Line up hose handle with telescopic tube. Push hose handle into telescopic tube until clicks and locks into place.



Line up and push the other end of the telescopic tube into the powered head until it clicks into place.



Slide the adjuster on the telescopic extension tube and select required length.

Getting started

Using your accessories

Dusting brush



Crevice tool



Upholstery tool

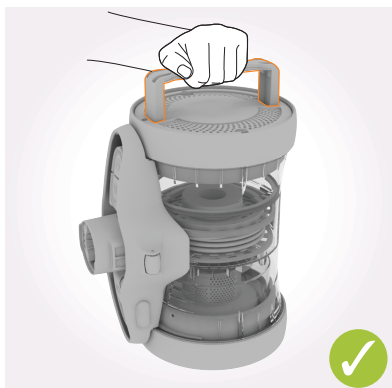


Hard floor tool



Choose an accessory and push onto the telescopic extension tube or hose handle until it clicks and/or locks into place. For most efficient results on hard floors replace the powerhead with the specialist hard floor tool.

Carrying your machine



Always use the carry handle to lift and carry the machine. Never stand the machine with the carry handle on the floor.

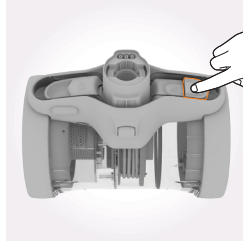
Using your machine

CAUTION: The power cord must always be completely unwound, do not pull further than the black marker.

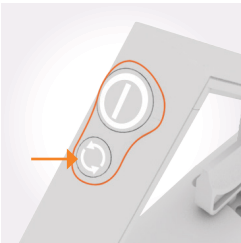
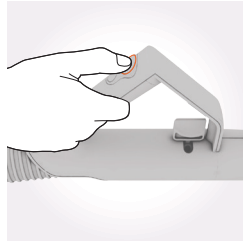
CAUTION: When the vacuum and powered head are switched on, never leave the powered head in one position for long periods of time. The powered head brush should be ON for carpets and OFF for hard floors.



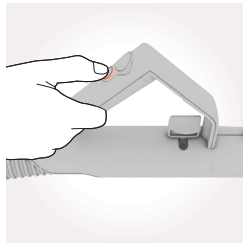
Unwind the power cord.
Do not pull further than the black marker.



Plug into the mains and press the On/Off button (ⓘ) on the machine, or on the hose handle to switch the machine on.

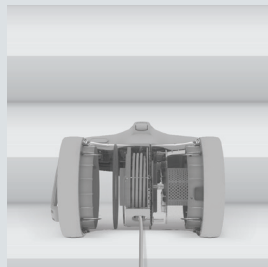
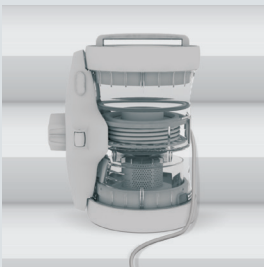


Press the powered head brush On/Off button once, the brushes on the powered head will spin. Press again and the brushes will stop.



Slide the vent cover on the hose handle to reduce suction if required.

Using your machine on the stairs



When cleaning stairs to prevent the vacuum cleaner falling, always stand the vacuum cleaner upright with the carry handle at the top.

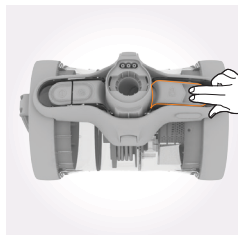
Taking care of your machine

CAUTION: The plug must be removed from the socket-outlet before cleaning or maintaining the appliance.

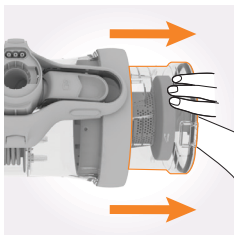
Emptying and cleaning the dirt container



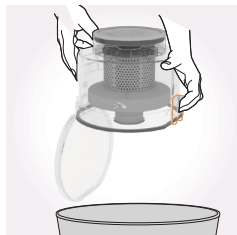
Do not over-fill the machine. Stand the machine vertically to check whether the max fill line has been reached.



Place the machine hose side up. Pull and slide dirt container release button.

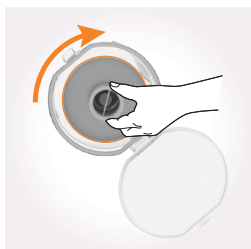


Pull to remove dirt container from main body.

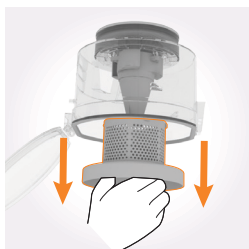


Hold dirt container over a bin and press the dirt release clip on the bottom of the dirt container, allowing dirt/debris to fall out.

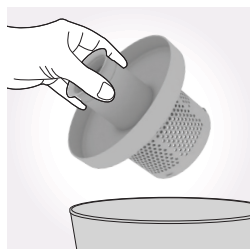
Cleaning the shroud and separator



Twist the shroud clockwise to unlock.



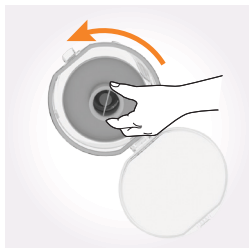
Pull to remove the shroud out of the dirt container.



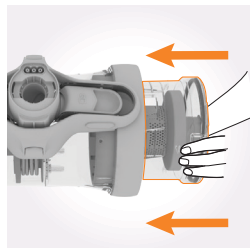
Tap the shroud over a bin to remove any dirt/debris. Using a soft brush remove any remaining dirt/debris from the shroud.



Wipe the dirt container and separator with a damp cloth to remove dirt/debris.



Line up the tabs on the separator into the dirt container. Twist the separator anti-clockwise to lock into place.



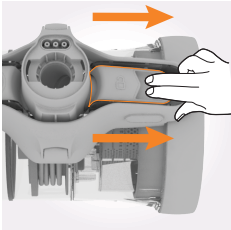
Line up dirt container with marked arrows and push firmly into main body of vacuum cleaner.

Taking care of your machine

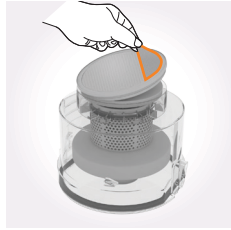
CAUTION: For best cleaning results filters require cleaning every 3-6 months or more frequently depending upon level of use of vacuum cleaner. Discoloured or damaged filters need replacing. Unplug and switch off the vacuum cleaner before performing maintenance or troubleshooting checks.

IMPORTANT: Do not use your vacuum cleaner with a clogged filter and without the filter in place.

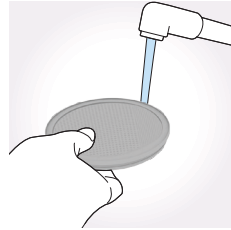
Cleaning the pre-motor filter



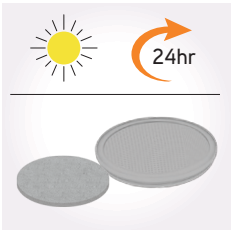
Pull and slide the dirt container release button. Pull to remove dirt container from main body.



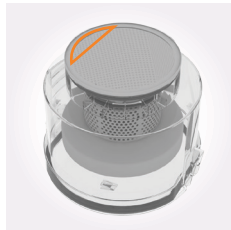
Pull the tab on the pre-motor filter to remove the pre-motor filter from the base of the dirt container.



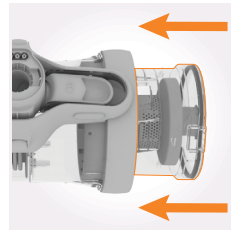
Tap the pre-motor filter and sponge over a bin to remove any dirt/debris. Wash the filter and sponge under running water (40°C max).



Leave for at least 24hrs or until fully dry before re-fitting.

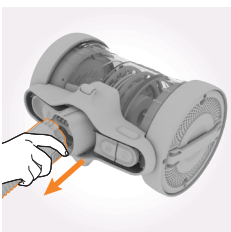


Make sure the tab on the pre-motor filter is visible when re-fitting the pre-motor filter and sponge into the dirt container.

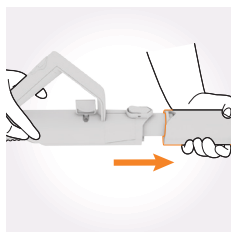


Line up dirt container with marked arrows and push firmly into main body of vacuum cleaner.

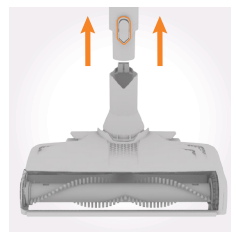
Removing hose, telescopic extension tube and accessories



Squeeze both buttons on either side of hose connector. Pull to remove hose.



Press release clip on hose handle, pull to remove telescopic tube.

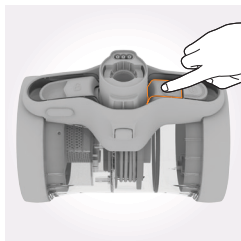


Press release clip on telescopic extension tube, pull to remove accessory.

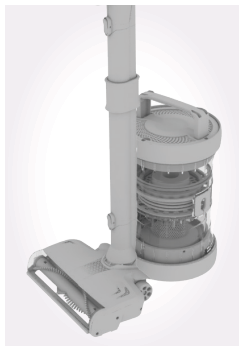
Taking care of your machine

CAUTION: Remove the accessory from the hose or telescopic extension tube before performing any maintenance or troubleshooting checks.

Storing your vacuum cleaner

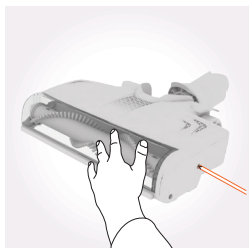


Press cord rewind button to retract cord into vacuum cleaner.

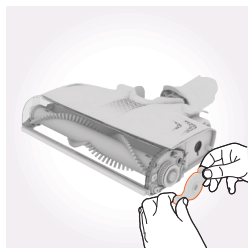


Stand the vacuum cleaner upright with the carry handle at the top. Place the floorhead parking clip into the semi-circular slot on the top of the vacuum cleaner.

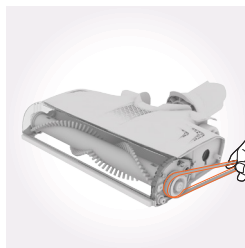
Removing blockages from the powered head



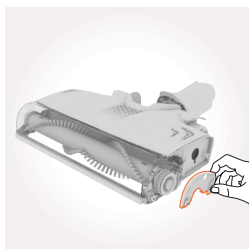
Using a crosshead screwdriver, remove 3 screws from the side of the floorhead and remove end cap belt cover.



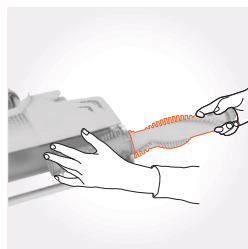
Pull and remove the brushbar location plate.



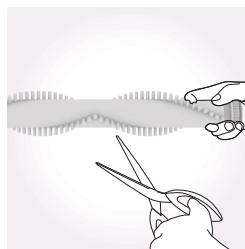
Remove the belt.



Lift and remove the top part of the brushbar side cover.



Pull brushbar and remove.



Use scissors to remove any blockages before replacing back into the machine.

IMPORTANT: The powered head has a 5 second delay when the brushbar is halted/jammed. Turn off and resume power after 5 seconds.

Removing blockages from the hose



Remove the hose from the vacuum cleaner and telescopic extension tube. Remove any blockage by inserting a wire coat hanger into the hose. **NOTE:** Check for blockages on a regular basis and do not use if damaged.

CAUTION: The hose contains electrical connections. Do not use to suck up water or immerse in water for cleaning.

What to do if it goes wrong

Problem

Solution

There is an accessory missing.

- Check the 'This pack contains' panel on the box to make sure the part is included with your vacuum cleaner.

Why does my vacuum cleaner have no power?

- The plug may not be fully pushed into the electrical socket.
- The On/Off button on the vacuum cleaner or the hose handle has not been turned on. Go to 'Using your machine'.
- The motor thermostat may have tripped. If this has happened, unplug the vacuum cleaner. Remove and empty the dirt container and check the hose for blockages. Clean the filter and allow the vacuum cleaner to cool for approximately 1 hour (if you have washed the filter you will need to wait 24 hours for the filter to fully dry before refitting back into the vacuum cleaner).

Why won't the vacuum cleaner pick up?

- The dirt container may not be correctly fitted, remove the dirt container from the vacuum cleaner and check it's assembled correctly, refit ensuring it's locked into place. Go to 'Taking care of your machine'.
- The brushes on the powered head have not been turned on. Go to 'Using your machine'.
- The filter may be clogged, clean the filter. Go to 'Taking care of your machine'.
- The dirt container, shroud or separator may be blocked, empty and clean the dirt container. Go to 'Taking care of your machine'.
- There may be a blockage in the hose/telescopic extension tube/power head. Disconnect from the vacuum cleaner and carefully remove any blockages. Go to 'Let's talk technical'.

Why won't the powered head brush turn?

- Activate powered head brush by pressing powered head brush On/Off button. Go to 'Using your machine'.
- The powered head may be blocked. Go to 'Removing blockages from the powered head'.

Why is dust escaping from the vacuum?

- The filter may be clogged, clean the filter. Go to 'Taking care of your machine'.

CAUTION: To reduce the risk of personal injury, unplug the vacuum before performing maintenance/troubleshooting checks.



Taking care of you

We're here if you need us. For trouble shooting, simply call or visit:

Australia: 1300 361 505*

vax.com.au

New Zealand: 0800 800 900*

vax.co.nz

*Monday-Friday 8.30am to 5.00pm

Accessories

Don't forget your accessories!

Order at: www.vax.com.au / www.vax.co.nz

Pro Cleaning Kit Model no. VPCK

Crevice tool

For awkward gaps and crevices.

Upholstery attachment

Gently cleans large areas of upholstery, curtains, sofas and chairs.

Pet hair removal attachment

Tackles stubborn pet hair on furniture, rugs and carpets.

Stubborn dust brush attachment

Removes built up dust from skirting, banisters and corners.



Radiator Tool

Long slim design, is perfect for cleaning behind and inside the radiator.



Up Top Tool

Ideal for reaching those hard to reach high areas.



Mattress Tool

Quickly and easily removes embedded dust from mattresses.



Soft Brush

Gently removes dust and dirt from delicate surfaces such as tiles and glass without scratching.



Filter Pack

Model no. VX29F

Includes pre-motor filter and pre-motor sponge.







Notes





Performance is everything.™

Distributed by Techtronic Industries Australia Pty. Ltd.
31 Gilby Road, Mt Waverley, VIC 3149 Australia.
Careline AU: 1300 361 505 www.vax.com.au
Careline NZ: 0800 800 900 www.vax.co.nz