



NZ: 0800 800 900

**MACH™1**



What's your Vax's model number?

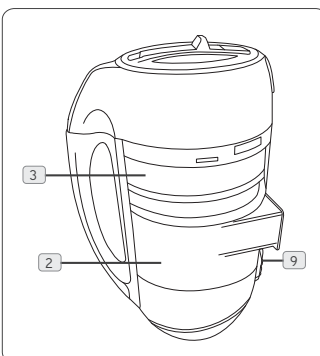
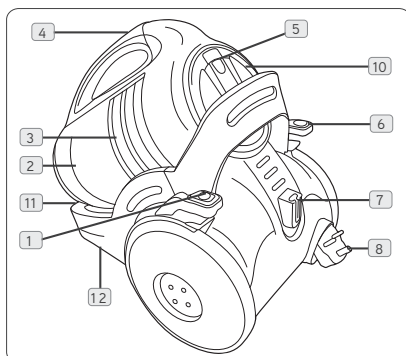
V M A T 1 4 0 0 W / V M C B 1 4 0 0 W

What's your serial number? (Located on the base of the machine)

Note these down in case you need them in future. Please keep instructions for further use.



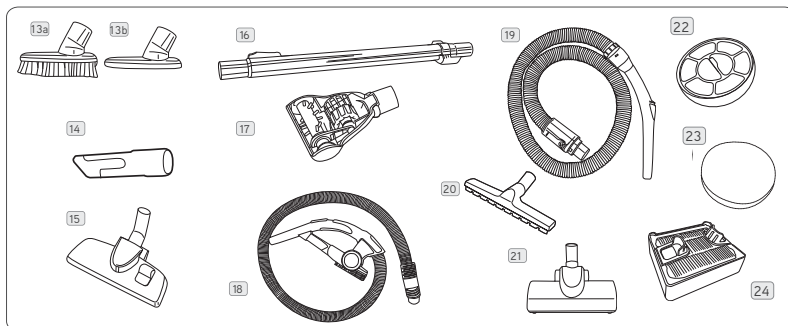
# Machine Overview



## 1. Machine Overview

### The Unit

- |                               |                                 |                                 |
|-------------------------------|---------------------------------|---------------------------------|
| 1 On/Off Button               | 5 Dirt Container Release Button | 9 Dirt Bin Quick Release Button |
| 2 Dirt Container              | 6 Auto Cord Rewind              | 10 Pre-Motor Filter Cover       |
| 3 Cyclone Separator           | 7 Floor Tool Parking Slot       | 11 Hose Inlet                   |
| 4 Dirt Container Carry Handle | 8 Plug                          | 12 Post Motor Filter Cover      |



## 2. Accessories Overview

- 13 2-in-1 Tool
- 14 Crevice Tool
- 15 Combination Floor Tool (Not inc. on model VMAT1400W)
- 16 Telescopic Tube
- 17 TurboTool  
For pet hair, stair and upholstery cleaning.  
NOTE: Do not use the Turbo tool on suede and leather surfaces (VMAT1400W MODEL ONLY)
- 18 Standard Hose
- 19 Stretch Hose (VMAT1400W ONLY)

NOTE: The stretch hose should not be used as the main hose. The stretch hose is recommended to be used for stair cleaning. The unit should always be positioned at the bottom of the stairs.

- 20 Hard Floor Tool (VMAT1400W ONLY)
- 21 Turbo Brush (VMAT1400W ONLY)  
NOTE: Not recommended for hard floors.  
For carpeted areas only
- 22 Foam Pre-Motor Filter
- 23 Fabric Pre-Motor Filter
- 24 HEPA Post-motor Filter  
Anti bacterial HEPA Post-Motor Filter

# General Safety Information

## FOR HOUSEHOLD USE ONLY.

When using the vacuum cleaner, basic safety precautions should always be observed, including the following:

1. Only use the vacuum cleaner indoors on dry surfaces.
2. Turn off the vacuum cleaner controls before disconnecting or connecting from the mains supply.
3. Always unplug the vacuum cleaner before connecting or disconnecting the vacuum hose and accessories.
4. Children should be supervised to ensure that they do not play with the appliance.
5. This appliance is not intended for use by persons (including children) with reduced physical, sensory or mental capabilities, or lack of experience and knowledge, unless they have been given supervision or instruction concerning use of the appliance by a person responsible for their safety.
6. Use only as described in this manual. Use only Vax recommended attachments.
7. Do not use the vacuum cleaner if it has been dropped, damaged, left outdoors or dropped into water. Do not use the vacuum cleaner with a damaged cord or plug. If the supply cord is damaged, it must be replaced by the manufacturer, its service agent or similarly qualified persons in order to avoid a hazard.
8. Do not pull or carry by cord. Do not use the cord as a handle, close a door on the cord or pull cord around sharp edges or corners. Do not run the vacuum cleaner over the cord. Keep the cord away from heated surfaces.
9. Do not handle the plug or vacuum cleaner with wet hands. Do not use outdoors or on wet surfaces.
10. Do not put any objects into openings. Do not use with any openings blocked and do not restrict airflow. Keep all openings free of dust, lint, hair or anything that might reduce airflow.
11. Keep hair, loose clothing, fingers and all parts of the body away from openings and moving parts.
12. Do not pick up hot coals, ash, cigarette butts, matches or any hot, smoking or burning objects.
13. Do not pick up flammable or combustible materials (lighter fluid, petrol, kerosene etc.) or use in the presence of explosive liquids or vapours.
14. Do not vacuum up harmful or toxic material (chlorine, bleach, ammonia, drain cleaner etc.).
15. Do not vacuum up hard or sharp objects such as glass, nails, screws, coins, etc.
16. Do not vacuum plaster dust, concrete dust or any other building or vitreous materials.

17. Do not vacuum baking soda or any other powder-based carpet refresher or deodoriser.
18. Do not use without ALL of the filters in place or with blocked filters
19. Take extra care when vacuuming on stairs.
20. Keep vacuuming area well lit.
21. Store the vacuum cleaner in a cool, dry area.
22. Turn off the on/off switch before unplugging the vacuum cleaner.
23. Use only SAA approved 10 amp extension cords. Non-approved cords may overheat. Care should be taken to arrange the cord so that the cord cannot be tripped over.



**WARNING:** Always switch off and unplug the vacuum cleaner from the electrical outlet before assembling, opening or emptying the dirt container, or before connecting/disconnecting the attachments.



**CAUTION:** The vacuum cleaner is a very powerful unit. Before plugging the cord into the electrical outlet, make sure the switch is in the 'off' position. Hold the vacuum cleaner firmly when starting and in use.



**IMPORTANT:** If the inlet, hose or telescopic tube is blocked, switch off the vacuum cleaner and remove the blockage(s) before re-starting the vacuum cleaner.



**IMPORTANT:** It is very important that filters are kept clean to obtain maximum performance from your vacuum cleaner. Not cleaning and not replacing the filters regularly can reduce the suction power and cause overheating and permanent damage to the vacuum cleaner. If your filters are washable make sure they are completely dry before inserting back into the vacuum cleaner

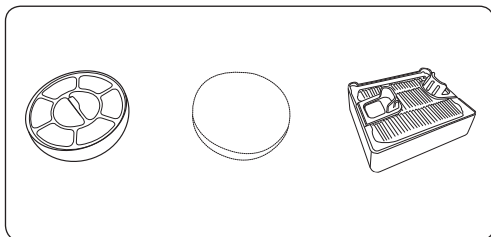
**This machine is intended for household use only, and NOT for commercial or industrial use.**

**PLEASE KEEP THESE INSTRUCTIONS FOR FURTHER USE.**

**Damage to the vacuum cleaner as a direct result of not adhering to the general safety instructions in this user guide invalidates the warranty.**

# Operation

## Filters

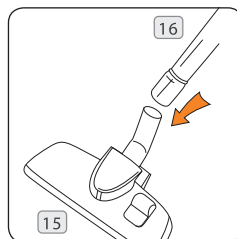
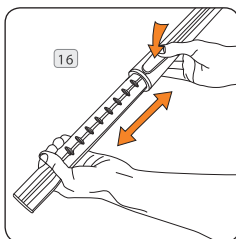
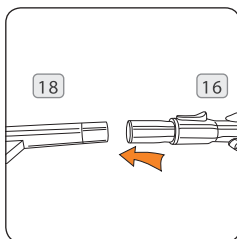
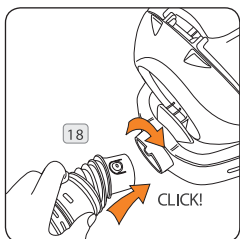


### Keep your Vax like new

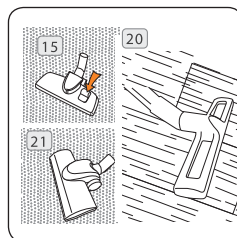
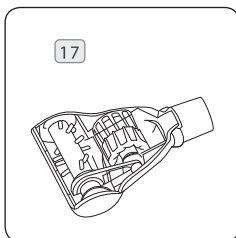
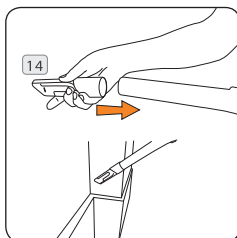
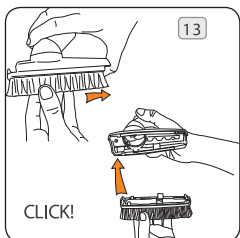
**!** **IMPORTANT:** The condition of the filters affects the performance of your vacuum cleaner. Please check and wash filters regularly (depending on level of use). See Maintaining the Filters on page 7.

**!** **IMPORTANT:** Do not use the vacuum cleaner without all the filters in place.

## Assembling your vacuum cleaner

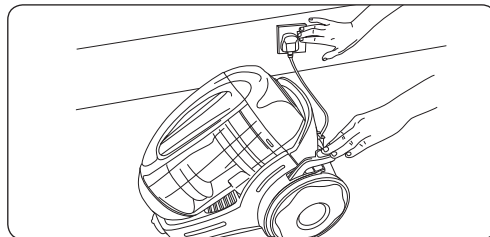
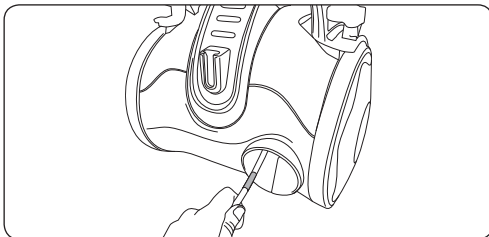


## Choose the attachments for the job



# Operation

## Operating the appliance

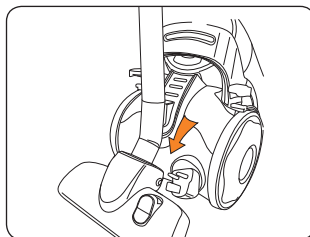
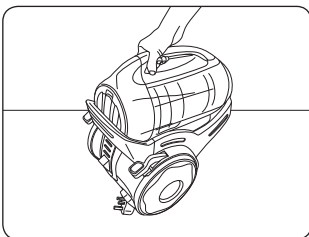
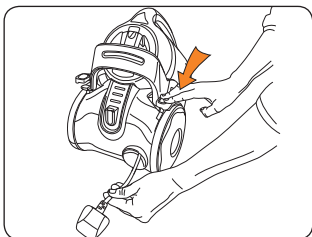


**WARNING:** Always switch off and unplug the vacuum cleaner from the electrical outlet before assembling, opening or emptying the dirt container, or before connecting/disconnecting the attachments.

**NOTE:** Fully unwind the power cord. A yellow mark on the power cord indicates the recommended cord length. Do not exceed the cord length beyond the red mark.

## Packing away and storage

**IMPORTANT:** Always unplug the vacuum from the electrical outlet and rewind the power cord as directed before storing.




**NOTE:** When rewinding the power cord, guide the cord with one hand. This will prevent the cord from whipping which could cause damage or injury.

**NOTE:** For convenience there is a parking slot located at the rear of the vacuum cleaner where the floor tool and hose can be parked for carrying and storage.

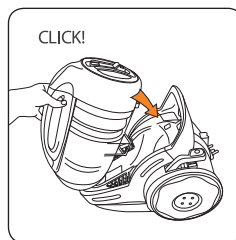
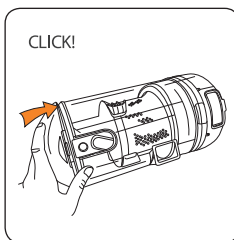
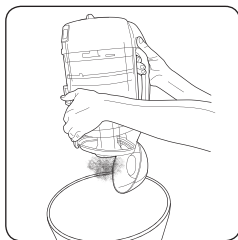
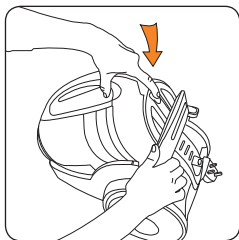
# Maintenance (Keep your Vax as good as new)

## Dirt Container


 **IMPORTANT:** Always switch off and unplug the vacuum cleaner from the electrical outlet before removing the dirt container.

 **IMPORTANT:** Do NOT use the vacuum without ALL of the filters in place.

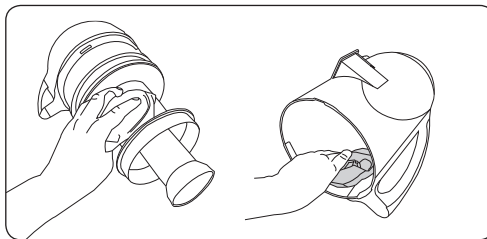
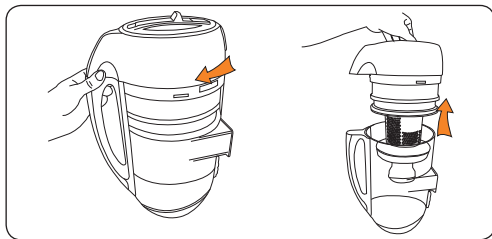
## Emptying the Dirt Container



## Cleaning the Cyclone Separator

 **IMPORTANT:** Remove the Dirt Container from the unit and dispose of the dirt inside the container before cleaning.


 **IMPORTANT:** The cyclone separator should not be submerged in water.

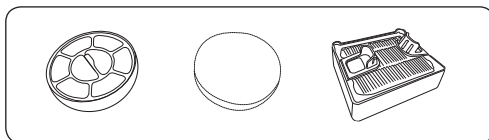


When the cyclone separator has been cleaned and dried completely, re-attach the dirt container to the lid of the separator and return the dirt container to the unit.

# Maintenance (Keep your Vax as good as new)

## Maintaining the Filters

 **NOTE:** Do not use any detergents or boiling water to wash the filters.




 **IMPORTANT:** Your Vax vacuum cleaner is fitted with high performance filters it is essential that these are well maintained and cleaned according to the following instructions.

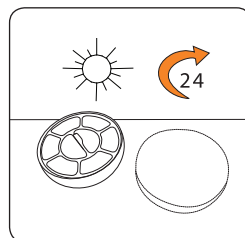
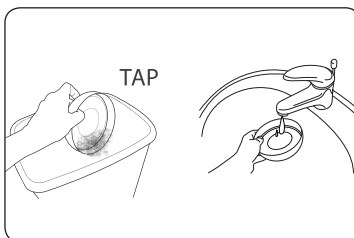
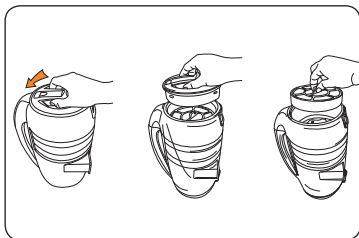
Vax recommends that the pre-motor and post-motor filter should be checked and cleaned periodically depending on the frequency of use and the volume of dirt being picked upon each occasion.

**NOTE:** Both Pre- and Post-Motor Filters can be rinsed in warm water (max 40°C). Allow to air dry for 24 hours before replacing. Do NOT use any detergents or boiling water to wash the filters.

Once completely dry, return the filters and case to the vacuum cleaner. Replace all filters covers before restarting the vacuum cleaner.

 **IMPORTANT:** Even with regular cleaning, filters have a limited lifespan and will eventually need to be replaced during the lifetime of the vacuum cleaner. If the performance of your vacuum cleaner is compromised and/or the filters are severely discoloured, the filters may need to be replaced. As a general guide, Vax recommends filters are replaced every 3-6 months depending on the level of use to ensure optimum performance of your vacuum cleaner.

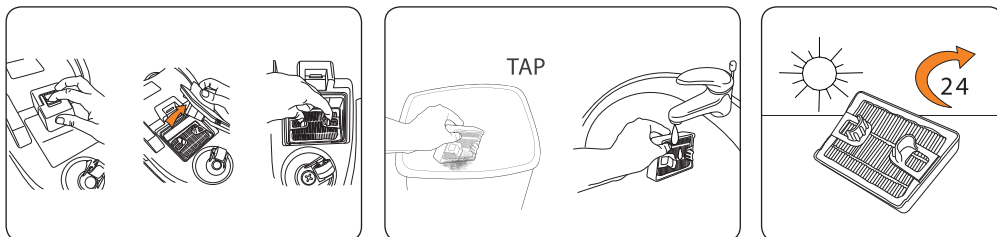
## Cleaning the Pre-Motor Filter





# Maintenance (Keep your Vax as good as new)

## Cleaning the Post-Motor Filter



**NOTE:** This is located at the base of the vacuum cleaner.

## Cleaning Blockages

**⚠ WARNING:** To reduce the risk of electric shock, the power cord must be disconnected before performing maintenance/ troubleshooting checks. Turn the vacuum cleaner off and unplug from the electrical outlet.

### Hose Blockages

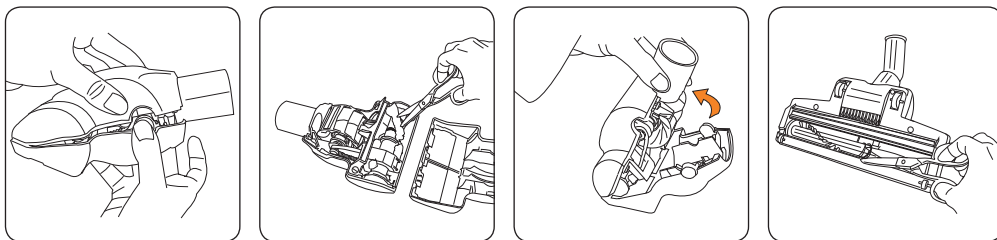
The flexible hose may be disconnected from the vacuum cleaner. Carefully remove any blockages found and reconnect hose securely.

### Accessory Blockages

Remove accessory from hose handle/ tube. Carefully remove the blockage and return to the cleaner.

## Cleaning Debris from the Turbo Tool and Turbo Brush (VMAT1400W MODEL ONLY)

**NOTE:** Switch the cleaner off and disconnect the power plug from the electrical outlet.



The brushbar will stop rotating if it is blocked during operation by vacuuming foreign objects, or if strands of carpet or hair are wrapped around it.

Switch the vacuum cleaner off and disconnect the power plug from the electrical outlet.

Lay the Turbo Brush floor head on a flat surface and turn over to expose the brushbar. Using a pair of scissors, cut through any threads or hairs caught by the brushbar that have wrapped around the guides.

# FAQ's



**WARNING:** To reduce the risk of personal injury, unplug the vacuum cleaner before performing maintenance/troubleshooting checks.

Problem	Solution
Is there an accessory missing?	Check the 'Machine Overview' page in this guide to make sure the part is definitely included in your unit.
	If it is missing, we're here to help. Simply call us on <b>AU: 1300 361 505 / NZ: 0800 800 900</b>
Why won't the vacuum cleaner pick up?	The filters may be clogged or need to be replaced: Refer to the Maintenance sections (Pages 6-8).
	The dirt container is full or blocked: Refer to the Maintenance sections (Page 6).
	The dirt container may be incorrectly installed: Refer to the Maintenance sections (Page 5).
	The brushbar may be blocked. Refer to the Maintenance sections (Page 6).
Why is dust escaping from the vacuum?	The filters may not be installed correctly. Refer to the Maintenance sections (Page 6).
	The dirt container may be incorrectly installed: Remove the dirt container from the unit by pressing the dirt container release button (Page 6) and reattach it to the unit, ensuring it is locked firmly back into place.
	The filters may be clogged or need to be replaced: Refer to the Maintenance sections (Pages 6-8).
What do I do if an accessory/the unit becomes damaged or broken?	Visit <a href="http://www.vax.com.au">www.vax.com.au</a> for parts and spares.
	Please call our Vax careline to purchase new spares or order a replacement: <b>AU: 1300 361 505 / NZ: 0800 800 900</b>
Why won't the accessories pick up properly?	The accessory may be blocked: Refer to the Maintenance section (Page 6).
	The accessory may be faulty: call our Vax Careline to order a replacement: <b>AU: 1300 361 505 / NZ: 0800 800 900</b>
Why will the vacuum cleaner not run?	It may not be plugged into the electrical outlet correctly. Ensure that the plug is pushed into the electrical outlet securely.
	The electrical outlet may not be working. Check the fuse or breaker and consult an electrician.

## we're here to help

Instead of taking me back to the shop, simply call:

**AU: 1300 361 505**  
**NZ: 0800 800 900**

[vax.com.au](http://vax.com.au)

This does not affect your statutory rights

# Other Information

## Vax Service & Help

### Vax Careline:

Australia 1300 361 505

New Zealand 0800 800 900

Monday-Friday 8.30am to 5.00pm

If you have queries or concerns about using your Vax, call the Vax Careline. Calls are charged at the standard local rate. Please make a note of the serial number and model number of the vacuum cleaner before calling.

For the nearest Service Agent, please call the Vax Customer Careline or visit [vax.com.au](http://vax.com.au)

## Technical Specification

Voltage: 220-240V ~50Hz

Wattage: 1400W

Capacity: 2.2 Litres

Filter: Cyclone separator – wipe clean  
Pre-motor filter – washable sponge  
HEPA Post-motor filter – washable

Cord length: 5m

Weight: VMAT1400W: 8.5kg  
VMCB1400W: 7.6kg

Subject to technical change without notice.



Double  
Insulated



N197



Indoor  
Use



Read  
Instructions



Waste electrical products should not be disposed of with household waste. Please recycle where facilities exist. Check with your Local Authority or retailer for recycling advice.



**Performance is everything.™**

Distributed by Techtronic Industries Pty. Ltd.  
Level 1, 660 Doncaster Road, Doncaster, Australia 3108.  
[www.vax.com.au](http://www.vax.com.au) Service Line: AU: 1300 361 505 / NZ: 0800 800 900