



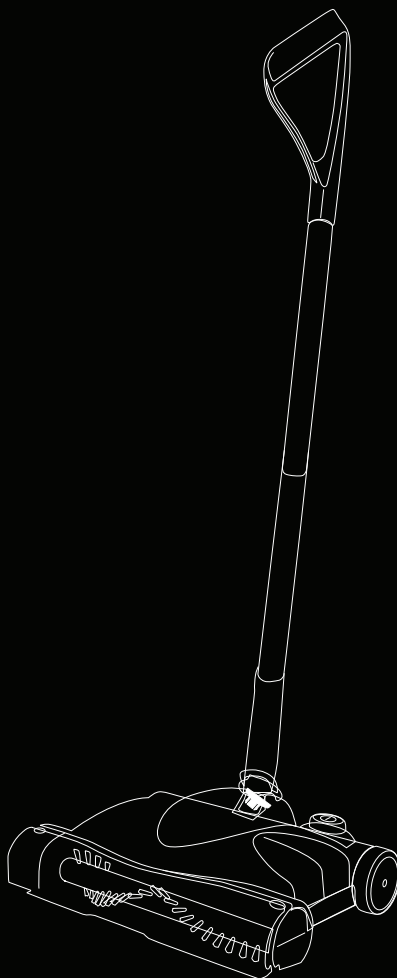
Performance is everything.™

# User Guide

Vax Careline: AU: 1300 361 505

NZ: 0800 800 900

## Revolution Cordless Sweeper



## Get Cleaning...

What's your Vax's model number?

5 3 0 0 0

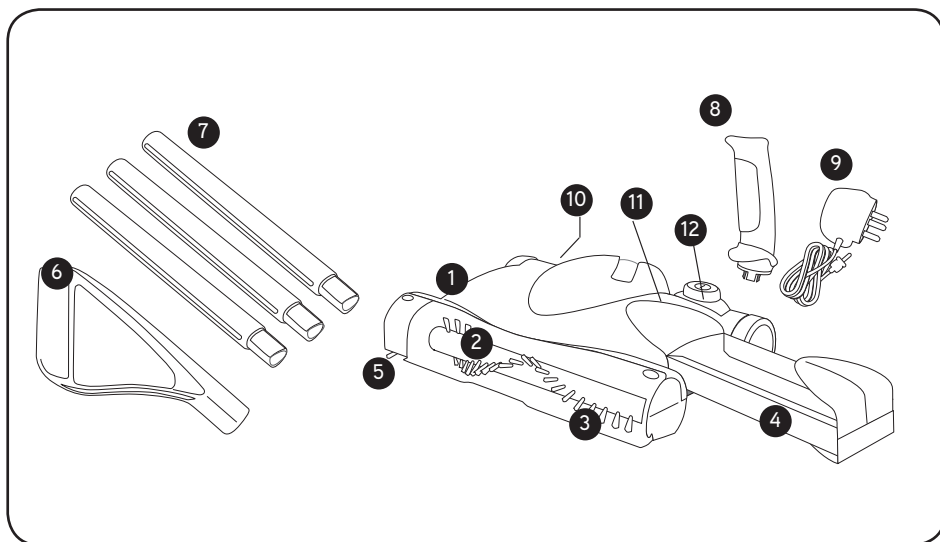
What's your serial number? (Located on the base of the machine)

■ ■ ■ ■ ■ ■ ■ ■ ■ ■ ■ ■ ■ ■ ■ ■ ■ ■ ■ ■

Note these down in case you need them in future. Please keep instructions for further use.



# Machine Overview



- |                |  |
|----------------|--|
| 1 Main Unit    | 7 Handle Tubes                               |
| 2 Brush Bar    | 8 Lower Handle (packed inside dust tray)     |
| 3 Front Visor  | 9 Charging Adaptor (packed inside dust tray) |
| 4 Dust Tray    | 10 Charging Jack                             |
| 5 Edge Wheel   | 11 LED Indicator                             |
| 6 Upper Handle | 12 ON/OFF button                             |

# General Safety Information

## FOR HOUSEHOLD USE ONLY.

When using the cordless sweeper, basic safety precautions should always be observed, including the following:

1. Do not store or charge the unit outdoors.
2. Do not use outdoors or on wet surfaces.
3. Do not handle the charger or appliance with wet hands.
4. Not to be used as a toy; pay close attention when used by or near children.
5. This appliance is not intended for use by persons (including children) with reduced physical, sensory or mental capabilities, or lack of experience and knowledge, unless they have been given supervision or instruction concerning use of the appliance by a person responsible for their safety.
6. Children should be supervised to ensure that they don't play with the appliance.
7. Use only as described in this manual. Never modify the charger in any way.
8. Only use the charger supplied with the product.
9. Do not attempt to use the charger with any other product nor attempt to charge this product with another charger. A charger that is suitable for one type of battery pack may create a risk of fire when used with another battery pack.
10. Do not abuse the charger cord as this can increase the risk of fire or electric shock. Never carry the charger by the cord. Do not pull the cord to disconnect from a socket; grasp the plug and pull to disconnect.
11. Keep the charger cord away from hot surfaces and sharp edges.
12. Do not handle the charger with wet hands.
13. The battery must be removed from the appliance before it is discarded.
14. Before use check the power supply and charger cord for signs of damage or ageing. To avoid damage do not wrap the cord around the charger for storage. A damaged or entangled charger cord can increase the risk of fire and electric shock.
15. The appliance must be disconnected from the mains supply when removing the battery.
16. This product includes NiMH batteries; do not incinerate batteries or expose to high temperatures, as they may explode.
17. Leaks from battery cells can occur under extreme conditions. If the liquid gets on the skin wash immediately with soap and water. If the liquid gets into the eyes, flush them immediately with clean water for a minimum of 10 minutes and seek medical attention. Liquid ejected from the battery may cause irritation or burns. In an emergency situation contact professional help immediately!
18. Do not use with any opening blocked; keep openings free of dust, lint, hair and anything that may interfere with the brushes.
19. Keep hair, clothing, fingers, and all parts of body clear of moving parts.
20. Do not pick up anything that is flammable, burning or smoking such as cigarettes, matches or hot ashes.
21. Avoid picking up hard sharp objects with the sweeper as they may cause damage to the unit.
22. Use extra care when cleaning on stairs.
23. Do not use in rain or leave outdoors whilst raining.

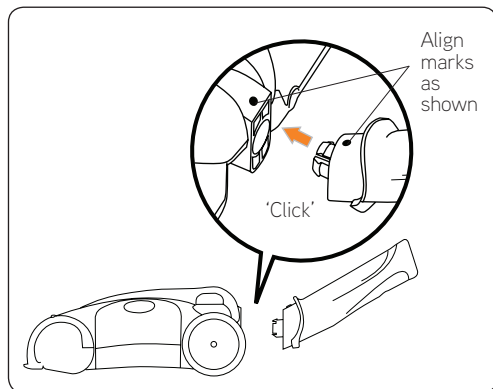
**DAMAGE TO THE VACUUM CLEANER CAUSED AS A DIRECT RESULT OF NOT ADHERING TO THE GENERAL SAFETY INFORMATION AND THE INSTRUCTIONS IN THIS USER GUIDE INVALIDATES THE WARRANTY.**

This machine is intended for household use only, and NOT for commercial or industrial use.

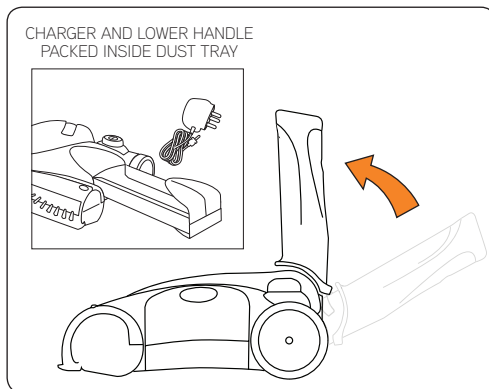
PLEASE KEEP THESE INSTRUCTIONS FOR FURTHER USE.

# Operation

## Assembly



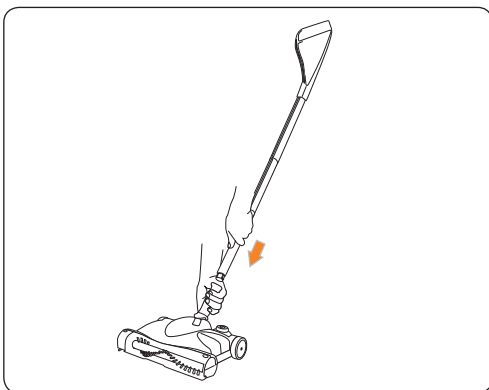
Insert Lower Handle to the main unit. Align marks as shown.



Rotate Lower Handle upwards.



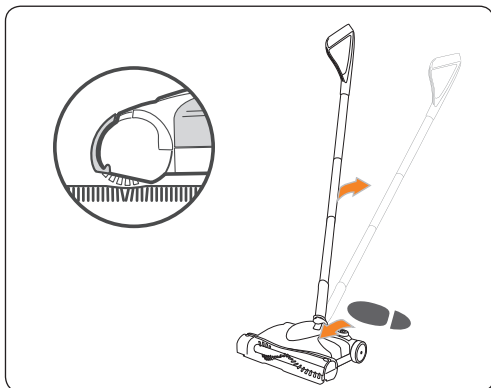
Assemble all 3 Handle Tubes and Upper Handle. Push down to ensure all 3 tubes are connected.



Fit the tubes and Upper Handle to the Lower Handle and unit.

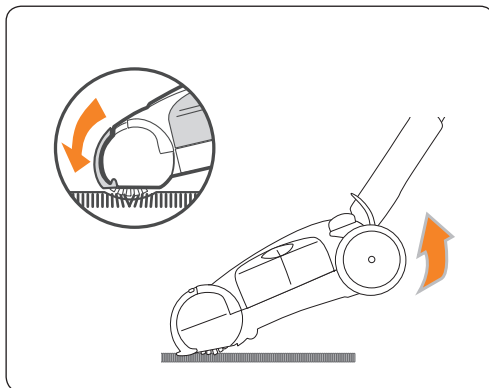
# Operation

## Floor cleaning



### Normal Cleaning

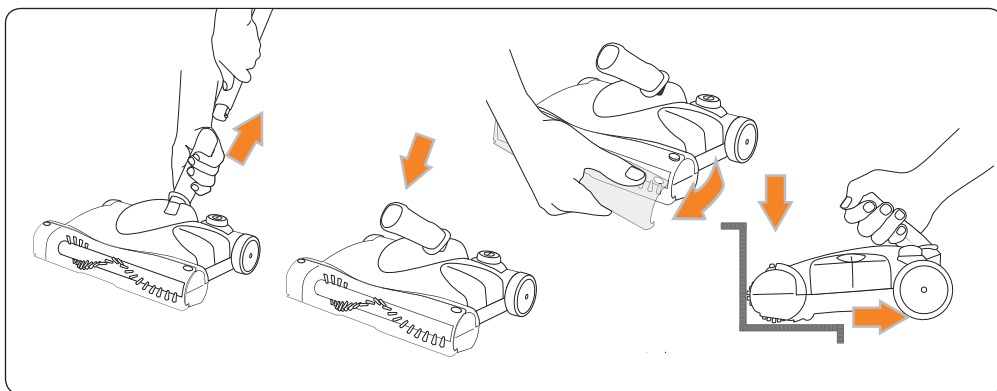
For normal cleaning turn the unit ON and push the sweeper flat over the floor.



### Deeper Cleaning

For deeper cleaning and carpet grooming, turn the unit ON and then lift the Handle to lower the brush bar into the carpet.

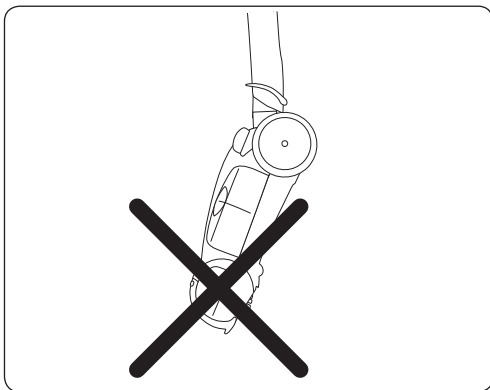
## Handheld Operation and Stair Cleaning



Remove the tubes and upper handle from the Lower Handle on unit. Face Lower Handle forward, remove Front Visor. Turn unit on and use on desired surface.

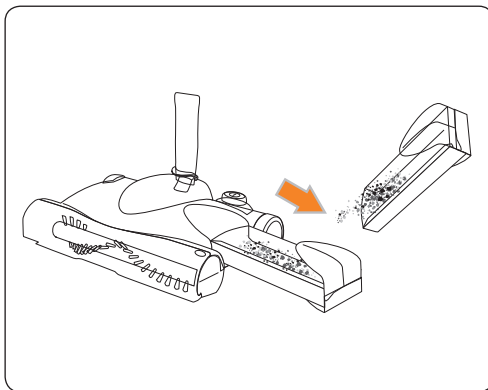
# Operation

## Carrying



To avoid spilling dirt from the Dust Tray do not carry the product 'nose down'.

## Emptying the dirt container





To achieve the best performance, empty the Dust Tray after each use.


# Operation


## Battery Charging & Recharging

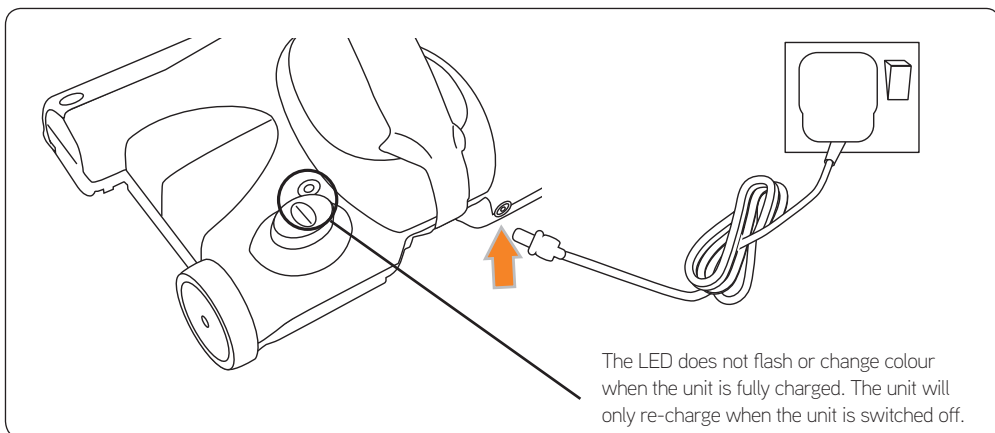
1. Connect the Charging Adaptor to the Charging Jack on the rear of the Main Unit, and then plug into an electrical outlet. The LED illuminates RED when the charger is connected.
2. Charge the unit for at least 16 hours. Do not charge the sweeper for longer than 24 hours.
3. Once the battery is fully charged switch off the charger at the mains socket, remove the charging jack from the battery pack, and unplug the charger from the mains socket. Do not pull the charger by the cord, grasp the charger and pull to disconnect.

 **WARNING:** Only use the charger provided with the product. Using another charger may damage the product and battery.

 **WARNING:** Before use check the power supply and charger cables for signs of damage or ageing. A damaged charger can increase risk of fire or electric shock.

 **WARNING:** If the battery is damaged in any way do not attempt to charge it and replace it immediately.

 **WARNING:** Never run the battery empty and then put the product away without switching it off - deep discharge can damage the battery.



**IMPORTANT:** To maintain peak performance of your cordless sweeper, it is recommended that the unit be fully discharged, then completely recharged at least once a month.

# Maintenance (Keep your Vax as good as new)

## Care and Maintenance



**WARNING:** Do not accidentally turn the unit on while cleaning it.

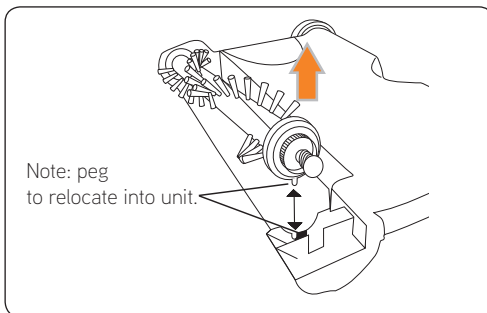
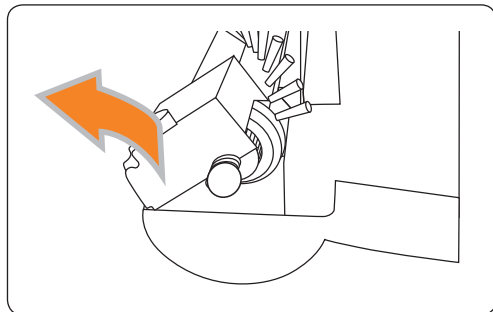
Each week clean the product with a dry cloth, plus the chamber in which the Dust Tray fits. Remove hair and fibre from the Brush Bar and Edge Wheel.

1. Don't use abrasive materials to clean the product or immerse it in water.
2. Don't pick up liquids or use on wet floors.
3. Don't use on concrete, tarmacadam or other rough surfaces.
4. Don't pick up pieces of string or fabrics with the unit.
5. Don't clean rug tassels or frayed carpets with the unit.

## Brush Bar Removal

The Brush Bar and Edge Wheel can be removed for cleaning or replacement.

1. Push the latch and un-hook the Edge Wheel cover from the front of the unit.
2. Slide the belt off the end of the Brush Bar drive gear.
3. Lift the end of the Brush Bar, then slide out of the unit.
4. The Edge Wheel Brush can be pushed out of the cover.
5. Remove any hair, fibre and dust from the Brush Bar.
6. Replace the Brush Bar by fitting the shaft into the bearing in the housing, then engage the end with the drive gear into the unit. Note: peg to relocate into unit.
7. Refit the belt onto the drive gear.
8. Hook the Edge Wheel Cover back onto the unit and push into place until the latch is securely engaged.



# Maintenance (Keep your Vax as good as new)

## Battery Pack Removal & Replacement

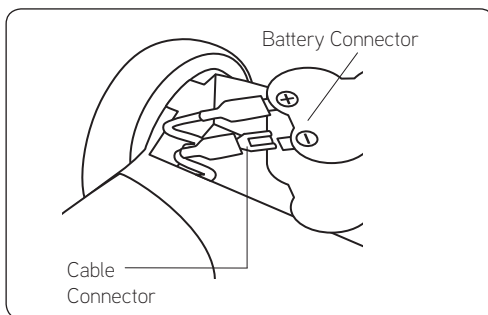
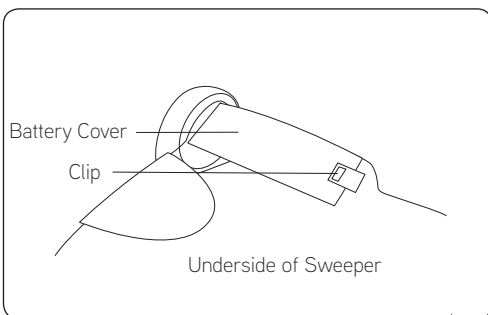
At the end of the product's or battery's life the battery should be removed for disposal and recycling. Only a technically competent person should undertake battery removal and replacement.

Follow these steps for battery removal or replacement:


1. Switch off the sweeper and ensure the Charger is disconnected.
2. Remove the Tubes and Dust Tray.
3. Turn the unit over, being careful not to switch the product on.
4. Press the clip to release the Battery Cover.
5. Carefully lift the battery out.
6. Slide the plastic cover off the black (-) cable connector.
7. Push the latch on the connector and pull the connector off the battery contact.
8. Repeat for the red (+) cable connector.
9. Push the cable connectors onto the new battery contacts, ensuring they are securely fitted.
10. Slide the plastic covers back over the connectors.
11. Replace the battery into the compartment and refit the battery cover.



**NOTE:** If uncertain as to how to replace your battery pack, we suggest you take your unit to a Vax authorised service agent to have this service performed. To find the location of your closest Vax repair agent go to [vax.com.au](http://vax.com.au) or call AU 1300 361 505 / NZ 0800 800 900



# Maintenance (Keep your Vax as good as new)

 **WARNING:** NEVER touch both the metal battery contacts at the same time with any metal objects as this may create sparks that can cause small burns. NEVER use the unit in a partially assembled state.



**IMPORTANT: ONLY USE A REPLACEMENT BATTERY AND PARTS AS SUPPLIED BY MANUFACTURER**

Replacement batteries, Brush Bars and Edge Wheels can be purchased through the Service Line:  
AU: 1300 361 505 / NZ: 0800 800 900 or by visiting [www.vax.com.au](http://www.vax.com.au)

# FAQ's



**WARNING:** To reduce the risk of personal injury, unplug the Sweeper before performing maintenance/troubleshooting checks.

| Problem                          | Cause   |
|----------------------------------|---|
| Product Is Not Working Properly? | <ol style="list-style-type: none"><li>1. Empty the Dust Tray.</li><li>2. Remove any build-up of hair or fibre from the Brush Bar and Edge Wheel.</li><li>3. Fully discharge the product (run until battery is flat) and then recharge for 16 hours.</li></ol> |

## we're here to help

Instead of taking me back  
to the shop, simply call:

**AU: 1300 361 505**  
**NZ: 0800 800 900**

**vax.com.au**

This does not affect your statutory rights

# Other Information

## Vax Service & Help

### Vax Careline:

Australia 1300 361 505


New Zealand 0800 800 900

Monday-Friday 8.30am to 5.00pm

If you have queries or concerns about using your Vax, call the Vax Careline. Calls are charged at the standard local rate. Please make a note of the serial number and model number of the vacuum cleaner before calling.

For the nearest Service Agent, please call the Vax Customer Careline or visit [vax.com.au](http://vax.com.au)

## Technical Specification

|   |   |
|---|---|
| Model Number:                               | 53000 (version 2)   |
| Charger Voltage:                            | 100-240V ~50Hz  |
| Unit operating cycle with full battery      | up to 60 minutes (dependent on floor surface)   |
| Battery type                                | 7.2 VDC 1.3Ah NiMH  |
| Charging period for fully discharge battery | 16 hours  |
| Battery charger output                      | 12V  150mA |
| Battery charger model                       | JOD-S-120015AU-C-2  |
| Sound level                                 | 75dB(A)   |
| Weight                                      | 1.6Kg   |

Subject to technical change without notice.



Double  
Insulated



N197



Indoor  
Use



Read  
Instructions







**Performance is everything.™**

Distributed by Techtronic Industries Australia Pty. Ltd.  
Level 1, 660 Doncaster Road, Doncaster, Australia 3108.  
[www.vax.com.au](http://www.vax.com.au) Service Line: AU: 1300 361 505 / NZ: 0800 800 900