

**vax**  
Advance  
VACUUM CLEANER

**BARREL  
VACUUM**



LET'S GET STARTED.

**1 YEAR WARRANTY**

**VX96**

[vax.com.au](http://vax.com.au)  
[vax.co.nz](http://vax.co.nz)

## Let's talk safety



### Basic safety precautions

**This vacuum cleaner is intended for household use only and NOT for commercial or industrial use.**

### **READ ALL THE INSTRUCTIONS BEFORE USING THIS APPLIANCE**

- Only use the vacuum cleaner indoors and keep the area you're cleaning well lit.
- Keep fingers, hair and loose clothing from moving parts and openings whilst using the vacuum cleaner.
- This appliance is not intended for use by persons (including children) with reduced physical, sensory or mental capabilities or lack of experience and knowledge unless they have been given supervision or instruction concerning use of the appliance by a person responsible for their safety.



### Don'ts

- Don't pull or carry by cord, use cord as a handle, close a door on cord, or pull cord around sharp edges or corners. Do not place product on cord. Do not run appliance over cord.
- Don't handle the plug or use the vacuum cleaner with wet hands.
- Don't use the vacuum cleaner with incorrect voltage as this may result in damage or injury to the user. The correct voltage is listed on the rating label.
- Don't vacuum up hot coals, cigarette butts, ash, matches or smoking hot burning items or use in an area where there may be harmful fluids (chlorine, bleach, and ammonia drain cleaner).



### Do's

- Always make sure the filter and dirt container are fitted correctly before using your vacuum cleaner.
- Turn off all controls on the vacuum cleaner before disconnecting or connecting the battery.
- Take extra care when cleaning on the stairs.
- Always switch off the vacuum cleaner before disconnecting or connecting the hose and accessories.
- Always protect the cord from heated surfaces or near open flames.

Children should not play with the vacuum cleaner. Cleaning and user maintenance should not be made by children without supervision

- Only Vax recommend tools and accessories should be used with this vacuum cleaner
- Vax recommends the use of a Residual Current Device rating of 30 mA or less.
- If the supply cord is damaged, it must be replaced by the manufacturer, or similarly qualified person in order to avoid a hazard, or invalidating the warranty.
- **IMPORTANT:** The motor is equipped with a thermal cut-out. If for any reason the unit should overheat, the thermostat will automatically turn the unit off. Should this occur, unplug the vacuum cleaner from the electrical outlet and turn off the switch. Remove dirt container and empty. Clean filters. Allow the unit to cool for approximately one (1) hour. To re-start, plug into an electrical outlet and switch back on.

- Don't attempt to remove blockages with sharp objects as this may cause damage to the vacuum cleaner.
- Don't vacuum hard or sharp objects such as glass, nails, screws or coins etc.
- Don't not vacuum plaster dust, concrete dust or any other building or vitreous material.
- Don't vacuum flour, baking soda or any other powder-based carpet refresher or deodoriser.
- Don't use this vacuum cleaner if it has been dropped, damaged or left outdoors.
- Don't vacuum up any flammable or combustible materials (lighter fluid, petrol, kerosene etc.) or use the vacuum cleaner in an area with explosive vapours or liquid.

- Use only SAA approved 10amp extension cords. Care should be taken to arrange the extension cord as it can be a trip hazard.
- Always carry the vacuum cleaner by the handle.
- Store your vacuum cleaner in a cool, dry area.
- Always keep the power cord away from the brushes whilst using your vacuum cleaner.

**PLEASE KEEP INSTRUCTIONS FOR FURTHER USE.**

# Thank you for buying this Compact Vacuum Cleaner.

## Taking care of your carpets and hard floors

The Compact Vacuum Cleaner is designed to make vacuuming carpets and hard floors regularly as effective and efficient as possible and this user guide will help you get the most out of your machine. Maintaining your carpets will ensure they keep their appearance for longer. You've chosen the carpets and hard floors for your home for a reason and Vax will help you take good care of them.

## Taking care of your Compact Vacuum Cleaner

Also inside this guide are instructions on maintaining your new machine, so that it's always ready when you are to tackle your carpets and hard floors.

## We're here if you need us

For troubleshooting simply visit or call:

**Australia: 1300 VAX AUS (1300 829 287)\***

**New Zealand: 0800 VAX NZL (0800 829 695)\***

The Vax logo is displayed in a bold, orange, sans-serif font. The letters are lowercase and have a slightly rounded, modern appearance.

**vax.com.au**

**vax.co.nz**

\*Monday – Friday: 8:30am -5:00pm

Calls are charged at the standard local rate. Please make note of the serial number and model number of the product before calling.

# Contents

## Compact Vacuum Cleaner

Let's talk safety

Getting to know your machine

Getting started

Using your machine

Taking care of your machine

What to do if it goes wrong

Getting in touch

Accessories

Notes

## Included with your machine



Crevice tool



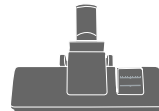
Dusting brush



Hose and handle



Telescopic wand



Combination floor tool

# Getting to know your machine

Dirt container handle

Power Button

Main body

Dirt container

Base

Dirt container lid

Hose Connector



Dirt container release latch

Variable power dial

Cord rewind button (hidden)

Wheel outer

Wheel inner  
(filter hidden under  
wheel cover)

Inner separator

Outer cyclone

Dirt container release latch



## Technical Specification

Name **Advance Bagless Vacuum Cleaner**

Model **VX96**

Voltage **220-240V ~ 50/60Hz**

Wattage **2000W**

Cord length **5m**

Weight **4.1kg**

Dirt Capacity: **2.0L**

## Accessories & Consumables

Filter pack\*

**VWCF2 Filter Pack**



Double Insulated



This product meets applicable regulatory requirements



Indoor Use Only



Read Instructions

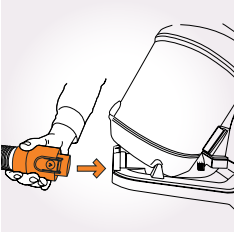
Subject to technical change without notice.

\*To purchase consumables and accessories, please visit [vax.com.au](http://vax.com.au) Made in China.

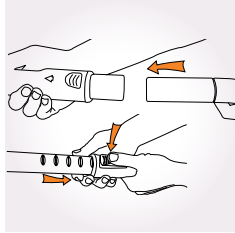
**PLEASE READ 'LET'S TALK SAFETY' AT THE BEGINNING BEFORE USE**

**CAUTION:** Before plugging the cord into the electrical socket, make sure the switch is in the 'off' position.

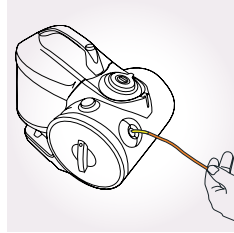
## Assembling your cylinder



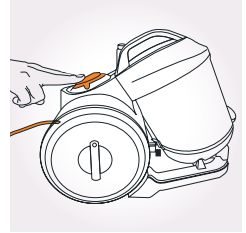
Insert the end of the hose into the unit. Ensure the hose has clicked into place.



Slot the metal telescopic extension tube and hose handle together. All accessories can be fitted to the end of the metal telescopic extension tube and hose handle.



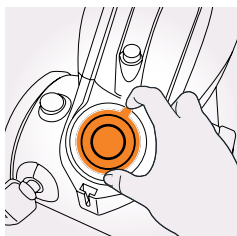
Fully unwind the power cord. A yellow mark on the cord indicates the recommended cord length. Do not exceed the cord beyond the yellow mark.



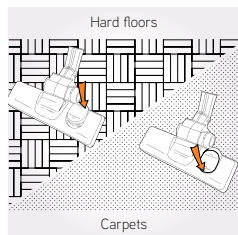
Plug in and switch the unit on by pressing the power button.

# Using your machine

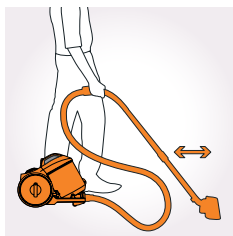
## How to use



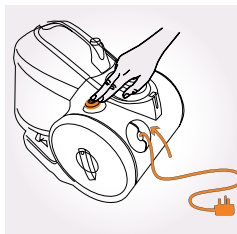
Adjust the power by rotating the dial for different surfaces as required.



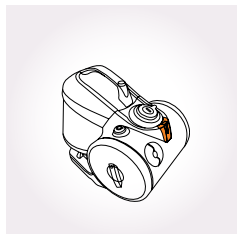
For use on carpets click rocker switch forward. For use on hard floors click rocker switch back.



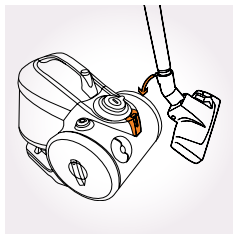
## Packing away and storage



Cable rewind button is located at the rear of the machine. After unplugging press the cable rewind until the cord is fully retracted.



For convenience there is a parking slot located at the rear of the vacuum cleaner where the floor head and tubes can be attached for storage and carrying.



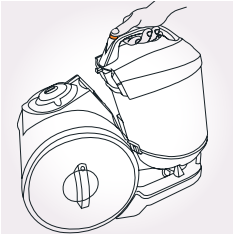


# Taking care of your machine – Filters

**IMPORTANT:** If the air inlet, hose or telescopic tube is blocked, switch off the vacuum cleaner and remove the blockage(s) before re-starting the vacuum cleaner.

**IMPORTANT:** The motor is equipped with a thermal cut-out. If for any reason the unit should overheat, the thermostat will automatically turn the unit off. Should this occur, unplug the vacuum cleaner from the electrical socket and turn off the switch. Remove and empty the dirt container. Check the hose for blockages. Clean the filters. Allow the unit to cool for approximately one hour (if you have washed the filters you will need to wait twenty four hours for the filters to dry before putting them back in the machine). To re-start the machine, plug it into an electrical socket and switch it back on.

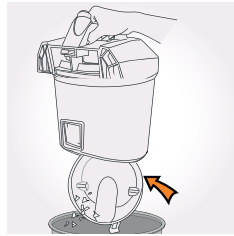
## Emptying and cleaning the dirt container



Remove dirt container by pushing down the dirt container release button and lifting the dirt container.



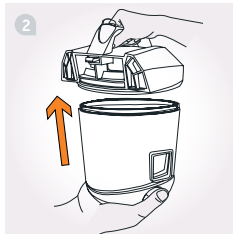
Hold the dirt container over a bin and press the dirt release latch (located at the rear of the dirt container).



## Cleaning the pre-motor filter



Hold the dirt container and twist the lid anti-clockwise.



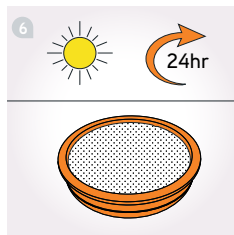
Lift the lid to reveal the pre-motor filter.



Lift out the pre-motor filter.



Tap excess dirt from the filter. Rinse under a tap and leave to dry for 24 hours.



**IMPORTANT:** Water temperature should not exceed 40°C when washing pre-motor filter.

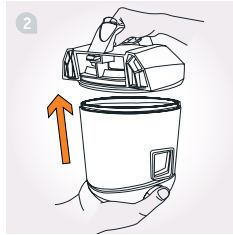
**IMPORTANT:** Ensure filters are completely dry before inserting back into the vacuum cleaner.

# Taking care of your machine – Filters

## Cleaning the shroud



Hold the dirt container and twist the lid anti-clockwise.



Lift the lid to reveal the pre-motor filter.



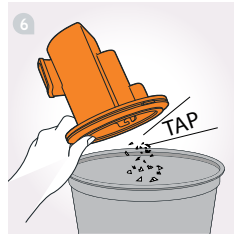
Lift out the pre-motor filter.



Remove the inner separator from the container.

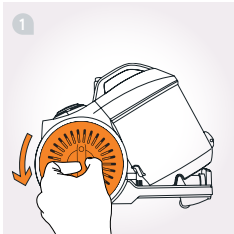


Remove the cap from the inner separator.

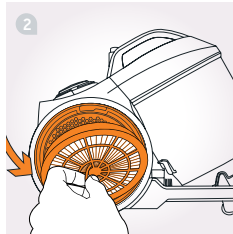


Dislodge any excess dirt by gently tapping the inner separator upside down above a bin.

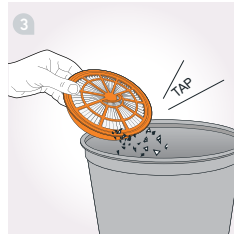
## Cleaning the HEPA media post-motor filter



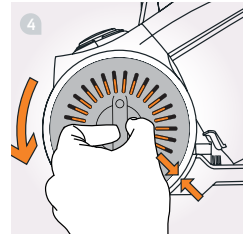
Post motor filter is located in the right side wheel. Hold the centre of the wheel and twist wheel cover anti-clockwise.



With the wheel cover off the post-motor filter is easily removed.



Tap all excess dirt off the filter. Do not wash.



Ensure to align the arrows on the filter cap when replacing the filter cap back onto the wheel.

# What to do if it goes wrong

## Problem

## Solution

There is an accessory missing.

- Check the 'Contents' page in this guide to make sure the part is definitely included in your unit.
- If it is missing, we're here to help. Simply call us on  
**AUS: 1300 VAX AUS (1300 829 287)**  
**/ NZ: 0800 VAX NZL (0800 829 695)**

Why won't the vacuum cleaner pick up?

- The filters may need cleaning, please refer to the 'Taking care of your machine – Filters'
- The separator may be clogged, please refer to the 'Taking care of your machine – Filters'
- There may be a blockage in the hose, please check the hose and remove the blockage
- The dirt container may be full or blocked, please refer to the 'Taking care of your machine – Emptying and cleaning dirt container'
- The dirt container may be incorrectly installed, please ensure the dirt container is locked in place

Why won't the accessories pick up properly?

- The accessory may be blocked – remove any blockages.

What do I do if the unit/ an accessory becomes damaged or broken?

- We're here to help. Simply call  
**AUS: 1300 VAX AUS (1300 829 287) /**  
**NZ: 0800 VAX NZL (0800 829 695)** or visit **vax.com.au**

Why does my vacuum cleaner have no power?

- It may not be plugged into the electrical outlet correctly; ensure that the plug is pushed in securely.
- The electrical outlet may not be working properly; check the fuse or breaker, or consult an electrician.
- The motor thermostat may have tripped; switch off and unplug the vacuum cleaner, and leave for one hour before switching the cleaner back on.

Why does the vacuum cleaner cut out?

- The motor is equipped with a thermal cut-out. If for any reason the unit should overheat, the thermostat will automatically turn the unit off. Should this occur, unplug the vacuum cleaner from the electrical socket and turn off the switch. Remove and empty the dirt container. Check the hose for blockages. Clean the filters. Allow the unit to cool for approximately 1 hour (if you have cleaned the filters you will need to wait 24 hours for the filters to dry before putting them back in the machine)

## Getting in touch

### Taking care of you

We're here if you need us. For trouble shooting, simply call or visit:

**Australia: 1300 829 287\***

**vax.com.au**

**New Zealand: 0800 829 695\***

**vax.co.nz**

\*Monday-Friday 8.30am to 5.00pm

\* Calls are charged at the standard local rate. Please make a note of the serial number and model number of the vacuum cleaner before calling.





## Notes

# vax

**Distributed by**

**Techtronic Industries Australia Pty Ltd**

31 Gilby Road, Mount Waverley, VIC 3149, Melbourne, Australia  
Careline AU: 1300 VAX AUS (1300 829 287) [www.vax.com.au](http://www.vax.com.au)

**Techtronic Industries N.Z. Limited**

2 Landing Drive, Mangere, Auckland, 2022, New Zealand  
Careline NZ: 0800 VAX NZL (0800 829 695) [www.vax.co.nz](http://www.vax.co.nz)