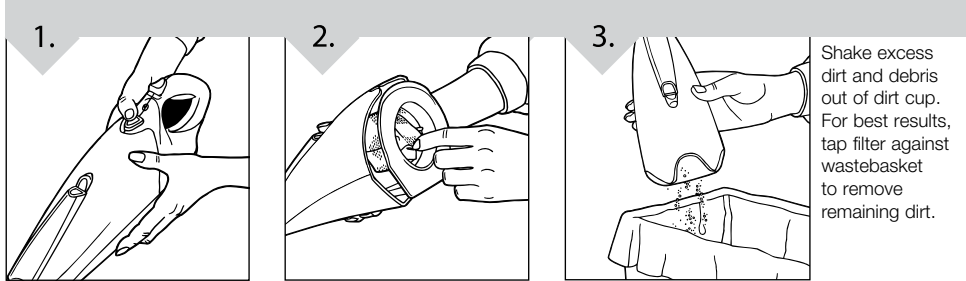


## Dirt Cup: Removal & Replacement

**WARNING:** TO REDUCE THE RISK OF INJURY FROM MOVING PARTS - UNPLUG VACUUM BEFORE SERVICING OR CHANGING FILTER.

**REGULAR MAINTENANCE:** Each time the dirt cup is emptied, the filter should be cleaned. Tap the filter firmly against the inside of a rubbish bin until the dirt stops falling from the filter. (Filter will be discoloured after use. This will not affect the filter's performance). Do not brush the filter. The cleaning instructions may vary depending on the dirt conditions. In some cases, more or less cleaning of the filter may be required.

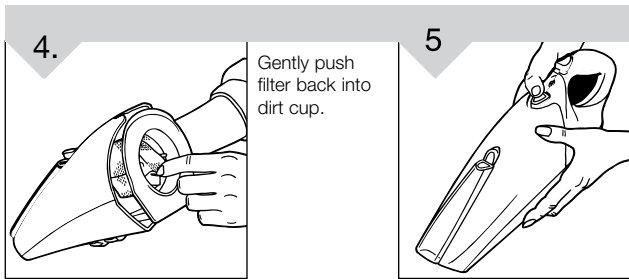
**IMPORTANT:** DO NOT WASH FILTER.



1. Depress the dirt cup release button and pull nozzle away from unit.

2. Hold nozzle over a wastebasket. Grasp filter and gently pull out.

3. Shake excess dirt and debris out of dirt cup. For best results, tap filter against wastebasket to remove remaining dirt.

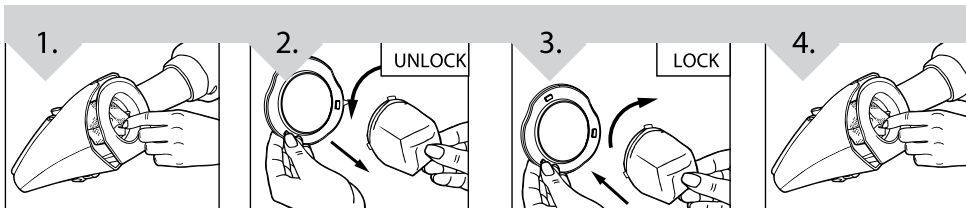


4. Gently push filter back into dirt cup.

5. To reattach dust cup: Align bottom first and rotate nozzle up, until it snaps into place.

## Filter: Removal & Replacement

**WARNING:** TO REDUCE THE RISK OF INJURY FROM MOVING PARTS - UNPLUG VACUUM BEFORE SERVICING OR CHANGING FILTER.



1. Remove dirt cup from unit. Grasp tab and pull filter assembly from dirt cup.

2. Twist **old** filter to remove from filter adapter.

**IMPORTANT:** Do not discard filter adapter.

3. Twist and lock **new** filter into filter adapter

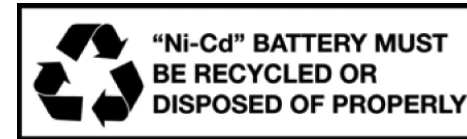
4. Return filter assembly to dirt cup. Return dirt cup to base of unit.



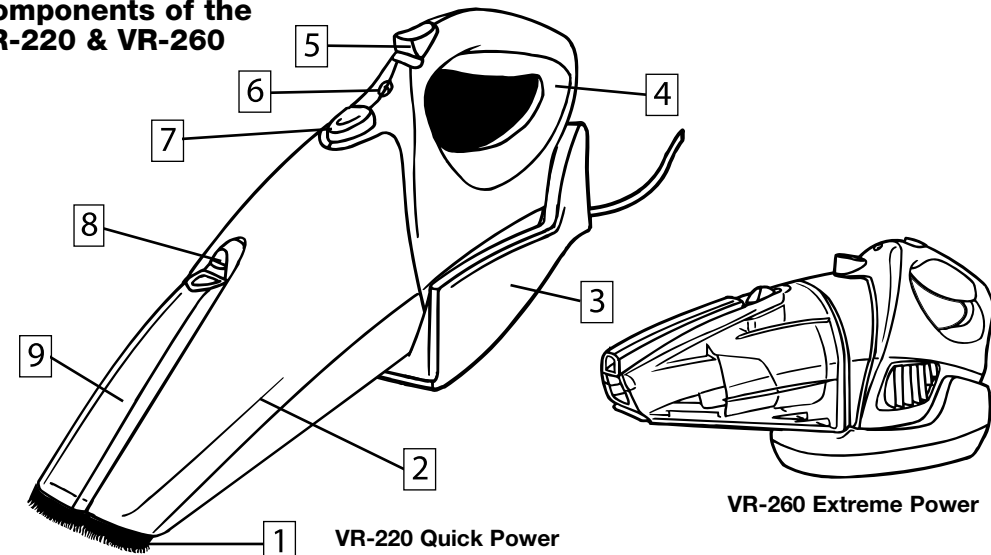
www.vax.com.au

**Vaxcare:**  
**AUST: 1300 36 4040**  
**NZ: 0800 800 900**

**VR-220** Quick Power with 9.6 volts &  
**VR-260** Extreme Power with 15.6 volts  
 Ni-Cd Battery Operated



## Components of the VR-220 & VR-260



- 1. Retractable Bristles
- 2. Dust Cup Filter
- 3. Charging/Storage Base

- 4. Handle
- 5. On/Off Switch
- 6. Charging Light

- 7. Dirt Cup Release Button
- 8. Crevice Tool Release Button
- 9. Crevice Tool

**12 month replacement VAXCARE warranty**

## Safety Instructions

THIS VACUUM IS INTENDED FOR HOUSEHOLD USE ONLY.

### IMPORTANT SAFETY INSTRUCTIONS SAVE THESE INSTRUCTIONS

When using an electrical appliance, basic precautions should always be observed, including the following:

- **READ ALL INSTRUCTIONS BEFORE USING THE APPLIANCE.**
- **ALWAYS FOLLOW THESE SAFETY INSTRUCTIONS.**

#### **WARNING: to reduce the risk of injury:**

- Do not use outdoors or on wet surfaces.
- Do not charge the unit outdoors.
- This appliance is not intended for use by young or infirm persons unless they have been adequately supervised by a responsible person to ensure that they can use the appliance safely. Young children should be supervised to ensure that they do not play with the appliance.
- Use only as described in this manual. Use only manufacturer's recommended attachments.
- Do not use with damaged cord or plug, if appliance has been dropped, damaged, left outdoors, or dropped into water.
- Do not abuse the cord. Never carry the charger or base by the cord or yank to disconnect from an outlet; instead grasp the charger and pull to disconnect. Keep cord away from heated surfaces. Do not pull cord around sharp edges or corners. Do not close door on the charger cord.
- Do not handle plug or appliance with wet hands.
- This product includes rechargeable nickel cadmium batteries. Do not incinerate batteries or expose to high temperatures, as they may explode.
- Unplug the charger from the outlet before any routine cleaning or maintenance.
- Do not put any object into openings.
- Do not use with any opening blocked; keep free of dust, lint, hair, and anything that may reduce air flow.
- Keep hair, loose clothing, fingers, and all parts of body away from openings and moving parts.
- Do not pick up anything that is burning or smoking, such as cigarettes, matches, or hot ashes.
- Do not use without filters in place.
- Turn off all controls before unplugging.
- Use extra care when cleaning on stairs.
- Do not use to pick up flammable or combustible liquids such as gasoline or use in areas where they may be present.
- Use only the charger supplied by the manufacturer to recharge.

## IMPORTANT: Ni-Cd Battery Disposal

Call your nearest recycling centre or local authority for information on the recycling and disposal of Ni-Cd batteries.

## Replacement Filter

Replacement filters are available from your stockist or Vax direct. Phone VAXCARE or visit [www.vax.com.au](http://www.vax.com.au)

## Troubleshooting

**WARNING:** To reduce the risk of injury, unplug vacuum before servicing.

#### **PROBLEM: Cleaner won't run.**

**Cause:** Battery not charged.

**Solution:** Charge battery. See charging pg 3.

**Cause:** Contacts between battery and charger dirty.

**Solution:** Wipe contacts clean.

#### **PROBLEM: Cleaner won't pick up or low suction.**

**Cause:** Battery charge is getting weak.

**Solution:** Charge battery.

**Cause:** Dirt cup is full.

**Solution:** Empty dirt cup.

**Cause:** Filter cartridge is dirty.

**Solution:** Clean or replace filter.

#### **PROBLEM: Dust escaping from cleaner.**

**Cause:** Dirt cup is full.

**Solution:** Empty dirt cup.

**Cause:** Filter is dirty.

**Solution:** Clean or replace filter.

## VAXCARE 12 Month Replacement Warranty

Please retain the Purchase Receipt as proof of purchase. This document must be presented in the event of making a claim under the terms of the VAXCARE Replacement Warranty.

VAX warrants this product against defects caused by faulty workmanship and materials for twelve months domestic use, (3 months commercial use) from date of purchase.

During this warranty period VAX will REPLACE any defective product. However, if the product includes a number of accessories, only the defective part or accessory will be replaced. VAX reserves the right to make minor adjustments instead of replacing the product or accessory.

**Subject to your statutory rights as to the merchantable quality of the product or accessory. In the event of a product or accessory being replaced during the warranty, the warranty on the replacement will expire at the original date i.e 12 months from the original purchase date.**

This warranty excludes defects caused by the product not being used in accordance with instructions, accidental damage, misuse or being tampered with by unauthorised persons. The Replacement Warranty also excludes breakages and consumable items.

If a failure or fault occurs with the vacuum cleaner, return the appliance to the store of purchase for replacement. If an accessory is at fault or fails, then phone **VAXCARE 1300 36 4040** for rectification or replacement.

This Replacement Warranty is additional to the conditions and warranty which are mandatory and as implied by the Trade Practices Act 1974 and other legislation.

## Storage/Charging

TOOL REQUIRED: SCREWDRIVER AND DRILL

### A. CHARGING/STORAGE BASE

- Designed to sit in the charging base on a flat surface (Diagram 1) or mount vertically (Diagram 2).
- For tidy storage, wrap excess cord on the back of the charging base and exit at either side or out the bottom.

### TO WALL MOUNT:

1. Place charging base against the mounting surface. Mark the centers of the holes.
2. Move base, then drill a 3/16" hole through the center of the marks.
3. Push plastic wall anchor into the drilled hole.
4. Be sure marked location is correct before drilling the second hole (adjust if necessary). Drill second hole and install other wall anchor.
5. Match up holes in storage base to wall anchors and insert screws. Be sure cord exits from one of the cord slots on the storage base.
6. Tighten the screws to hold the base flush to the mounting surface.

### B. UNIT STORAGE

1. Hold the unit by the handle and push down firmly onto the charging base.
2. Be sure the red charging light is on.

### C. CHARGING

**NOTE:** Use only the charger supplied by the manufacturer to recharge.

**IMPORTANT:** BEFORE FIRST USE, CHARGE YOUR UNIT FOR AT LEAST 24 HOURS.

- **Power switch must be in the OFF position.**
- Keep the charger plugged into a standard outlet at all times. It is normal for the charger to become warm to the touch when charging.
- If the operating time gets shorter after repeated use, let the unit run down. Recharge for 24 hours and repeat monthly for best results.

## How to Use

**TO USE:** Slide the power switch to the ON position.

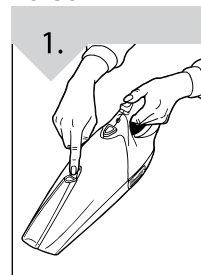
**TO TURN UNIT OFF:** Slide the power switch to the OFF position.

- Empty and clean the unit and filter after each use or after large pickups when the unit becomes full.

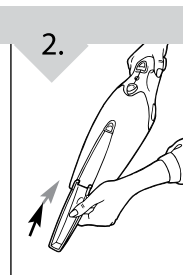
## Attachments

The crevice tool is permanently stored on-board. It is located on the top of the dust cup for your convenience.

### TO USE

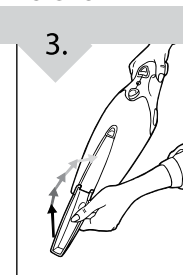


Press the crevice tool release button



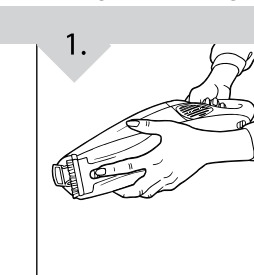
Flip crevice tool down to line up with nozzle then press up until secure in place.

### TO STORE

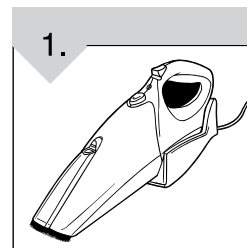


To store crevice tool: Pull down until loose. Flip crevice tool up and lock into place.

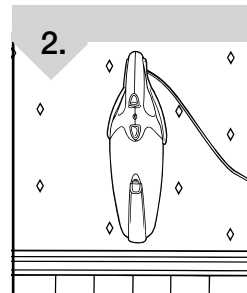
### RETRACTABLE BRISTLES



For cleaning delicate surfaces. Press down and slide forward switch underneath dirt container. Slide switch back to retract bristles.



Sits on a flat surface.



Can easily be mounted on wall.