

WARRANTY

The guarantee supplied with your VAX Marvel cordless hand-held vacuum cleaner, is for a period of twelve months from date of purchase. Please retain your proof of purchase docket. It is a requirement that the unit be returned direct to VAX for any work performed under Warranty

REPLACEMENT FILTER PACK (part no. 48500)

The replacement Filter Pack for the VAX Marvel comprises a pack of two filters.

STATE BRANCHES

1 NSW/ACT

Unit 2, 239 Beaconsfield St,
Milperra, NSW 2214
Telephone: (02) 9792 8900
Facsimile: (02) 9792 8911

1 VICTORIA/TASMANIA

Unit 3, 46 Burgess Road,
Bayswater North, VIC 3153
Telephone: (03) 9761 7160
Facsimile: (03) 9761 7175

1 QUEENSLAND

Unit 5, 95 Riverside Place,
Morningside, QLD 4170
Telephone: (07) 3399 1811
Facsimile: (07) 3399 5011

1 SOUTH AUSTRALIA/ NORTHERN TERRITORY

Unit 3, 75-77 Grange Road,
Welland, SA 5007
Telephone: (08) 8340 2222
Facsimile: (08) 8346 7933

1 WESTERN AUSTRALIA

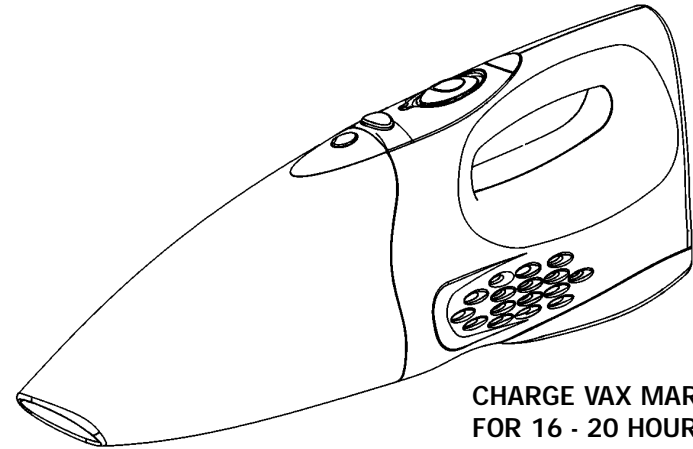
296 Victoria Road,
Malaga, WA 6090
Telephone: (08) 9247 8100
Facsimile: (08) 9247 8192

VAX Appliances (Australia) PTY LTD
A.C.N. 009099736

296 Victoria Road Malaga WA 6090.
Telephone: (08) 9247 8100 Fax: (08) 9247 8192
Email: vax@vax.com.au Website: www.vax.com.au

Marvel 6.0 VOLT CORDLESS
HAND-HELD
VACUUM CLEANER

INSTRUCTIONS FOR USE

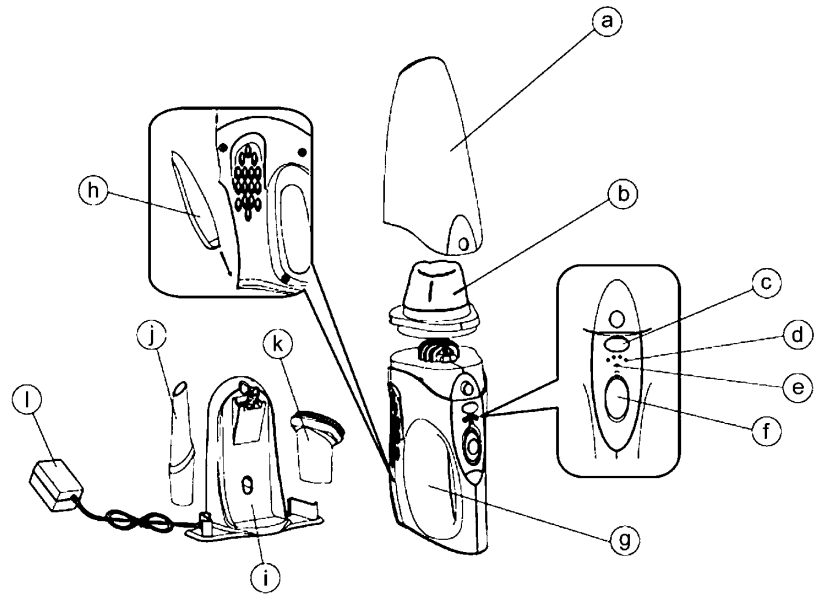


CHARGE VAX MARVEL
FOR 16 - 20 HOURS
PRIOR TO FIRST USE

SAVE THESE INSTRUCTIONS
FOR FUTURE REFERENCE



VAX MARVEL - CORDLESS HAND-HELD VACUUM CLEANER



- | | | |
|-------------------------------------|----------------------------------|----------------------------|
| a. Front nozzle/
dust container | d. Battery capacity
indicator | h. Battery compartment lid |
| b. Dust filter | e. Charging indicator | i. Charger |
| c. Dust container
release button | f. On/off switch | j. Crevice tool |
| | g. Housing | k. Small brush |
| | | l. AC mains adapter |

NOTE: VAX MARVEL CORDLESS HAND-HELD VACUUM CLEANER IS SUPPLIED WITH THE BATTERIES UNCHARGED. CHARGING OF THE UNIT FOR 16-20 HOURS PRIOR TO FIRST USE IS REQUIRED.

IMPORTANT SAFEGUARDS

To reduce the risk of fire, electrical shock, or injury when using an electrical appliance, basic safety precautions should always be observed, including the following:

READ ALL INSTRUCTIONS BEFORE USING YOUR CORDLESS HAND-HELD VACUUM CLEANER

- 1 Do not store or charge this unit outdoors.
- 1 Do not use outdoors or on wet surfaces.
- 1 This appliance is not intended for use by young or infirm persons without supervision. Never allow children to tamper or play with your VAX.

VAX BATTERY OPERATED APPLIANCES

VAX SUPER 2 RECHARGEABLE CORDLESS CLEANER

Compact vacuuming power for use in the home, car, caravan, anywhere at all.

With two motors for greater suction power, and go anywhere convenience, VAX Super 2 saves time and fuss with general household cleaning and unexpected chores alike.

BENEFITS:

- 1 Cordless, go anywhere cleaning power
- 1 Up to 30 minutes vacuuming capability
- 1 Powerful motorised cleaning head sweeps as it vacuums for thorough cleaning
 - 1 Fully extendible handle for use as upright cleaner
 - 1 Converts quickly to become a powerful hand held cleaner
 - 1 Wall mounted storage and easy recharging
 - 1 Ideal for use on any floor type



WITH WET AND DRY PICKUP

VAX 'Genie' is a lightweight, upright vacuum cleaner that easily converts to a portable hand-held. Ideal as a second vacuum cleaner or for use in smaller homes, units, villas, apartments and town houses.

BENEFITS:

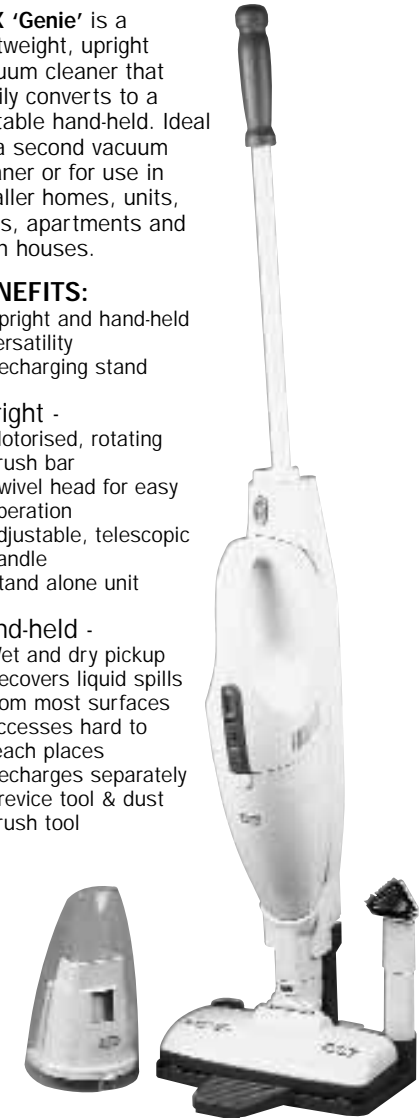
- 1 Upright and hand-held versatility
- 1 Recharging stand

Upright -

- 1 Motorised, rotating brush bar
- 1 Swivel head for easy operation
- 1 Adjustable, telescopic handle
- 1 Stand alone unit

Hand-held -

- 1 Wet and dry pickup
- 1 Recovers liquid spills from most surfaces
- 1 Accesses hard to reach places
- 1 Recharges separately
- 1 Crevice tool & dust brush tool



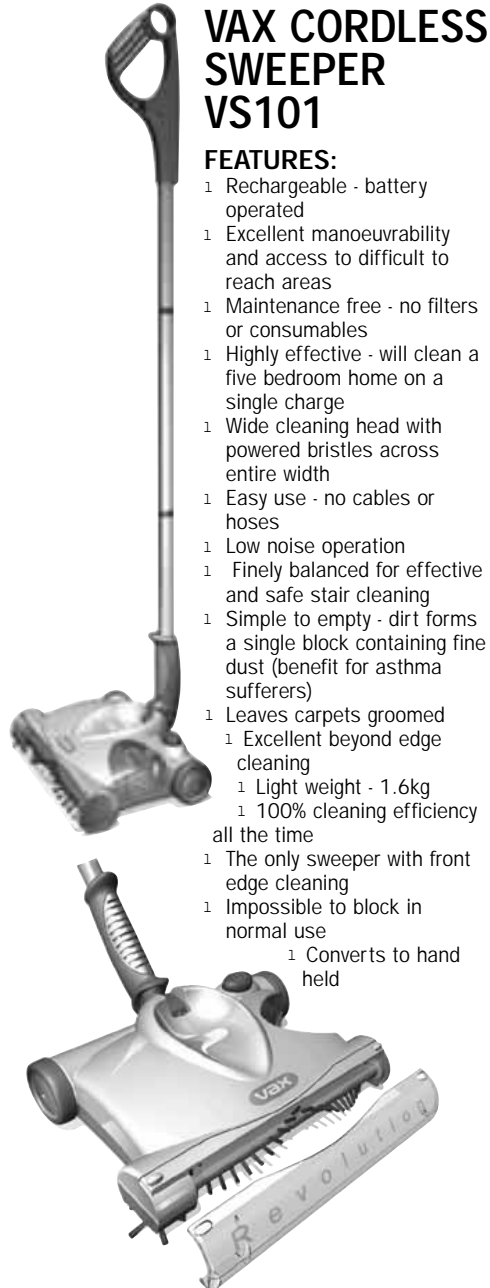
OTHER

BATTERY DISPOSAL

1. The vacuum cleaner is operated by lead-acid batteries. These batteries must be properly disposed.
2. When the batteries are no longer capable of being charged, take them out of the appliance and ensure proper disposal.
3. To remove the batteries, unscrew the lid on the underside of the vacuum cleaner.
4. Only remove the batteries when they are to be disposed.
5. Take the spent batteries to a recycling centre. Dispose in accordance with local laws and regulations.

IMPORTANT:

Replace with lead-acid batteries. If other batteries are used this can lead to damage to the appliance.



VAX CORDLESS SWEEPER VS101

FEATURES:

- 1 Rechargeable - battery operated
- 1 Excellent manoeuvrability and access to difficult to reach areas
- 1 Maintenance free - no filters or consumables
- 1 Highly effective - will clean a five bedroom home on a single charge
- 1 Wide cleaning head with powered bristles across entire width
- 1 Easy use - no cables or hoses
- 1 Low noise operation
- 1 Finely balanced for effective and safe stair cleaning
- 1 Simple to empty - dirt forms a single block containing fine dust (benefit for asthma sufferers)
- 1 Leaves carpets groomed
 - 1 Excellent beyond edge cleaning
 - 1 Light weight - 1.6kg
 - 1 100% cleaning efficiency all the time
- 1 The only sweeper with front edge cleaning
- 1 Impossible to block in normal use
 - 1 Converts to hand held



- 1 Use only as described in this manual. Use only manufacturer's recommended attachments.
- 1 Do not use with damaged cord or plug. Do not use the appliance if it has been dropped, damaged, left outdoors, or dropped in water.
- 1 Do not use the charger cable for any other purposes. Never carry the charger or mains adapter by the mains cable. Do not pull on the cable to disconnect the device from the mains. Always use the plug.
- 1 Keep the mains cable and the appliance away from sources of heat.
- 1 This product contains rechargeable lead-acid batteries. Do not throw the batteries into a fire or expose them to high temperatures, as they may burst.
- 1 Do not handle plug or appliance with wet hands.
- 1 Do not put any object into openings. Do not use with any opening blocked; keep free of dust, lint, hair and anything that may reduce air flow.
- 1 Keep hair, loose clothing, fingers, and all parts of body away from openings and moving parts.
- 1 Do not suck up anything that is burning or smoking, such as cigarettes, matches, or hot ashes.
- 1 Do not attempt to change accessories while unit is running.
- 1 Use extra care when cleaning on stairs.
- 1 Do not use to suck up flammable or combustible liquids such as gasoline or use in areas where they may be present.
- 1 Take note of all instructions and advice given on the appliance labels.
- 1 Do not use the mains adapter with an extension cable. Always connect the mains adapter directly to an electrical socket. Use the appliance only with the mains voltage indicated.
- 1 Do not use the hand vacuum cleaner without the dust filter in place.
- 1 Always store the appliance indoors. To avoid accidents always put the appliance away safely after use.
- 1 Leaks from battery cells can occur under extreme conditions. If liquid from batteries comes into contact with skin or eyes, wash or flush the affected area immediately with clean water and seek medical advice.
- 1 Use only on dry, indoor surfaces.
- 1 Do not use for any purpose other than described in this user's guide.
- 1 Do not use the mains adapter for another product or operate the appliance using another charger. Only the supplied charger should be used with the appliance.
- 1 The appliance must be disconnected from the supply when removing the batteries.

BEFORE USING FOR THE FIRST TIME

NOTE: The VAX Marvel cordless rechargeable hand-held vacuum cleaner is supplied with the batteries in the uncharged state. Before using the appliance for the first time charge the batteries for 16 – 20 hours.

1. The cordless vacuum cleaner is operated by rechargeable lead-acid batteries.
2. The rechargeable batteries reach their full capacity after a charging time of 16 to 20 hours. With fully charged batteries, the rechargeable vacuum cleaner will work for its full operating period. Continue to use the vacuum cleaner until the batteries are discharged and then charge them fully.
3. Place the vacuum on the charger when you are not using it. This will ensure that it is always fully charged and ready for use.

CHARGING

1. Position the charger (i) near a mains socket and insert the plug.
2. Place the vacuum cleaner into the charger (i). The red charging indicator light (e) comes on to show that the appliance is seated correctly in charger and that the charging process has begun.

NOTE: Do not forget to set the appliance On/off switch (f) in the Off position before charging begins.

3. Always replace the appliance back into the charger (i) so that it is always fully charged and ready for use.

IMPORTANT:

To ensure that you continue to obtain the best performance from your vacuum cleaner, we recommend that the batteries are fully discharged and fully recharged once a month.

HOW TO USE

1. Remove the vacuum cleaner from the charger (i).
2. Make sure that the dust filter (b) is installed before you use the appliance. To check that the dust filter is installed, open the front nozzle (a), by pressing the dust container release button (c) and remove the nozzle. With dust filter in place, slide the nozzle (a) back into position.
3. To operate the appliance, move the On/off switch (f) into the On position.
4. After use return the On/off switch (f) into the Off position.
5. The small brush (k) and the crevice tool (j) are used to clean narrow difficult to reach places. These tools can be inserted into the nozzle opening (a).
6. When all four LEDs in the battery charge indicator light up, the batteries are fully charged. The fewer LEDs illuminated, the lower the remaining battery capacity.
7. If preferred, the charger can be wall mounted.

IMPORTANT:

If, during operation of the appliance, only one LED lights up, this indicates that the battery capacity is low. When this occurs, the batteries should be recharged.

REPLACING AND CLEANING THE DUST FILTER

To obtain the best performance from your vacuum cleaner, empty the dust container (a) and clean the dust filter (b) after every use.

1. To open the front nozzle (a), press the dust container release button (c) and remove the dust container (a).
2. Take out the dust filter (b).
3. Empty the dust container (a).
4. Rinse the dust filter in cold water and wait until it is completely dry again before replacing it into the dust container (a).
5. Carefully replace the filter (b) back into the dust container (a). Never use the vacuum cleaner without the dust filter (b) in place.
6. Replace the front nozzle.

WARNING:

The nozzle opening and airway must be free and unobstructed at all times. Blockages can lead to overheating and damage to the motor.

REPLACEMENT FILTER PACK:

The replacement Filter Pack (part no. 48500) for the VAX Marvel, comprises a pack of two filters.